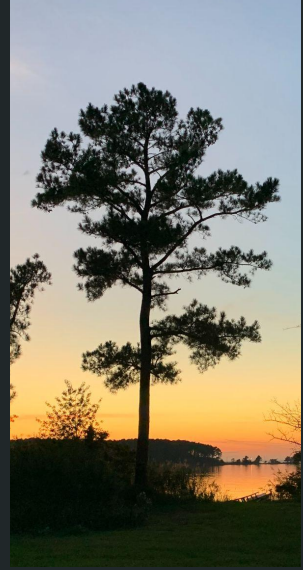


# 5 Million Trees, Please



Maryland Department of Natural Resources

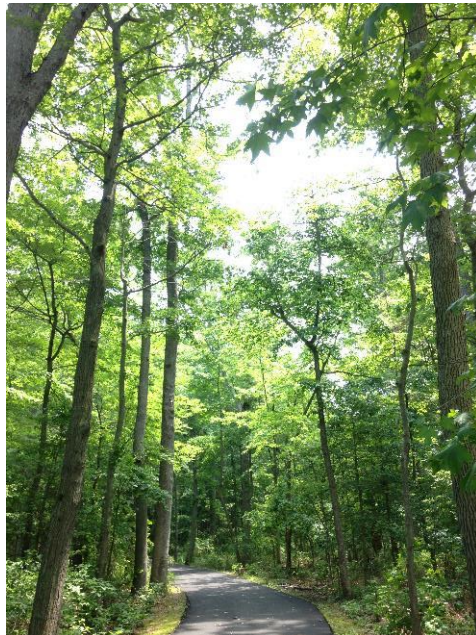
March 16, 2022



# 5 Million Trees

---

- Established by HB 991, Tree Solutions Now Act, in 2021
- 5 Million Trees by 2031
  - **Additional** to tree planting projected in 2019 Greenhouse Gas Reduction Act Draft Plan (current programs)
  - Native trees
- **Rural:** New Conservation Reserve Enhancement Program signing bonus, up to \$1,000/acre for new riparian forest buffers
- **Urban:** 10% to underserved areas
  - Chesapeake Bay Trust new Urban Forestry Program (\$10 million annually in grants)
- Funded starting July 1, 2022, \$15 million/year



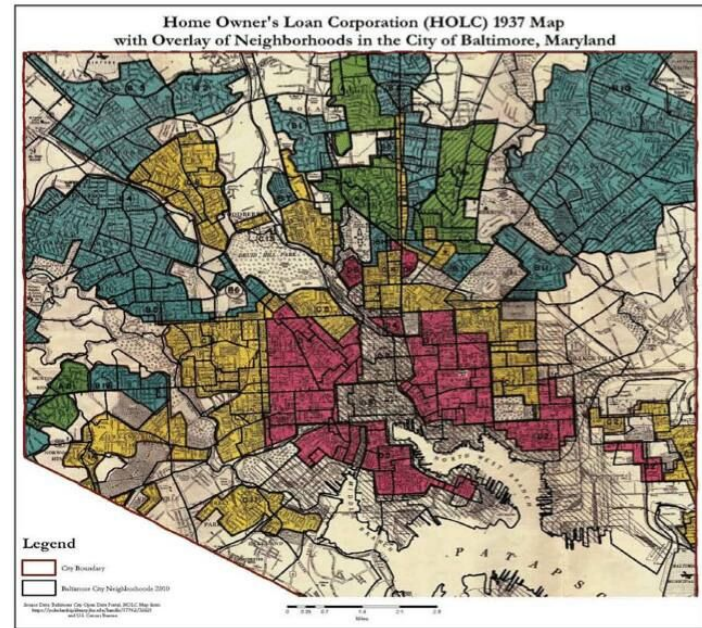
# 10% to Underserved Urban Areas

500,000 trees to Underserved Areas

- Census-designated Urban area
- With other qualifying factor
  - Redlined/hazardous by HOLC
  - Above-average unemployment
  - Median household income below 75% of State median income
  - DHCD housing project

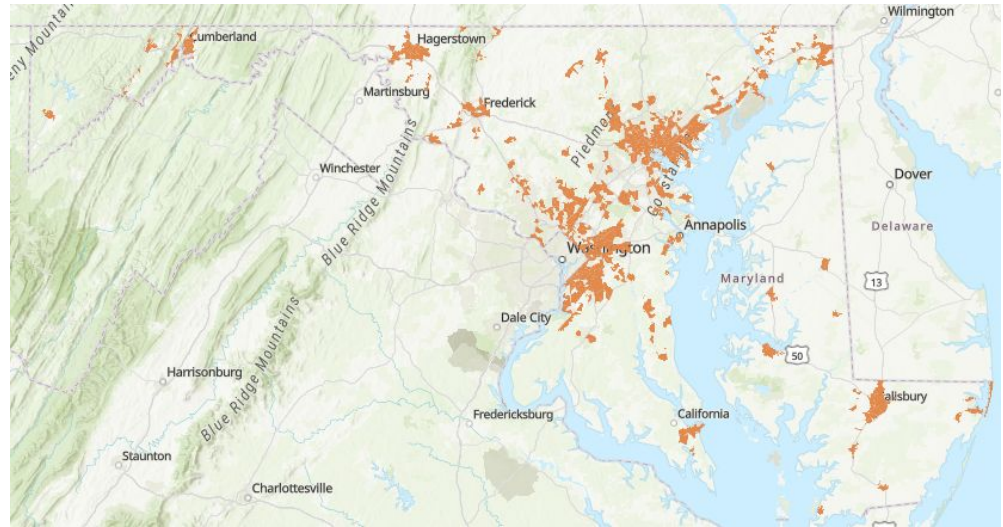
Prioritize local organizations for grant awards

Engage local individuals, groups, or businesses to implement and maintain



# Coordination, Tracking, and Targeting

- Shared Map of Urban Underserved area
  - Interactive map
  - Income and unemployment layers visible outside underserved areas
  - [Map of underserved areas](#)
  - Tracking Systems
  - Forest Service Data Team revising internal tracking
  - DNR Greenhouse Gas tracking
  - MDA and DNR reporting for Chesapeake Bay Goals





# What Counts?

---

## Eligible Costs

- Site preparation
- Labor
- Planting materials
- Maintaining trees following planting
- Landowner incentives or signing bonuses



# Coordination

---

## MDE

- 5 Million Trees Program Coordinator – tracking (with TMDL, GGRA)
- Commission for the Innovation and Advancement of Carbon Markets and Sustainable Tree Plantings

## DNR

- 13 Contractor Positions
- Trust Fund support for tree planting

## CBT

- Urban Forestry Program
- Grants for trees to Underserved Areas

## MDA

- CREP forest buffer signing bonuses



- ❖ Governor commits the trees towards the One Trillion Trees global initiative

DNR Positions provide:

- Technical Assistance
- Planning and Coordination related to:
  - tree plantings,
  - tree buffer management, and
  - forest management,
  - Including invasive vine removal
- On public and private lands
- Agricultural and Underserved areas

# DNR's Role in Maryland's 5 Million Trees Effort

- Provide **technical assistance** for growing 5 million trees
- Expand **tree seedling supply** at Ayton State Nursery
- **Increase capacity of existing** tree planting programs
- Create **new planting programs** that complement existing programs- gap fillers
- Build **community of care for growing trees** to maturity - maintenance
- **Leverage state investments** with new partners and markets to expand outreach and funding
- **Coordinate** with MD Dept. of Ag., MD Dept. of Environment, Chesapeake Bay Trust, and others



# Technical Assistance through 13 New Positions

- One Assistant Nursery Manager
  - Seedlings and seed collection
- 12 Tree Planting Specialists
  - Placed statewide, serve both urban and rural areas
  - Job duties:
    - Outreach and planning
    - Planting and maintenance
- Seeking a diversity of talent
  - Reflecting the geographic and demographic composition of the state





# Outreach for 13 New Positions

- **Hiring to reflect the geographic and demographic diversity of the state**
- **Outreach** through partners to build community connections
- **Training and mentoring** programs planned for core skills
- Projected start: July/August 2022

**BE PART OF THE 5 MILLION TREE MOVEMENT & JOIN THE MARYLAND FOREST SERVICE!  
13 OPEN POSITIONS COMING SOON**



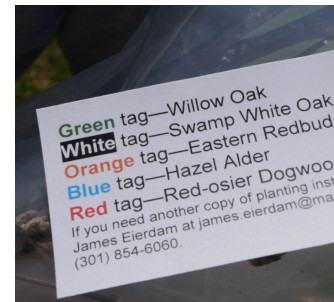
**HERE'S YOUR CHANCE TO JUMP INTO A NATURAL RESOURCES CAREER**

In a quest to plant 5 million trees over 9 years for the Tree Solutions Now Act of 2021, the MD Department of Natural Resources Forest Service is looking for a **diversity of talent** to help our cities and communities get thousands of trees in the ground. Positions are available across the state in rural and urban settings.



# Existing Planting Programs- Urban

- Marylanders Plant Trees
  - Coupon for \$25 off a native tree
- Tree-Mendous
  - Low-cost containerized trees for public land
- Gift of Trees
  - Purchase a tree in honor of someone
- Lawn to Woodland
  - Planting trees on private lawns
  - Turnkey, with 2 years of care
- Backyard Buffers
  - ~25 free seedlings for private landowners
- Maryland Urban and Community Forestry Committee Grant Programs



# Existing Planting Programs/Opportunities- Rural

- Conservation Reserve Enhancement Program (CREP)
  - Administered by USDA Farm Service Agency
  - HB 991 adds \$1,000 per acre bonus for new forest buffers
- Healthy Forest, Healthy Waters
  - Partnership of Alliance for the Chesapeake Bay, Maryland Forestry Foundation, & MD Forest Service technical support
  - Funded by Chesapeake and Coastal Bays Trust Fund
- Woodland Incentive Program (WIP)
  - Forest management cost-share program includes tree planting
  - Administered by Maryland Forest Service
- Other federal programs
  - Environmental Quality Incentives Program (EQIP)
  - Conservation Stewardship Program (CSP)
- Landowner funded plantings



# The 5 Million Trees Umbrella Program with partners

- Fill gaps of unmet need with HB 991 funds, subject to restrictions
  - Plant trees not intended for timber harvest
  - On private land, requires a binding, legal agreement to maintain the land in tree cover for 15 years
- Make it easy to plant trees
  - Quick funding decisions
  - Limited upfront costs
  - Options for turnkey planting with 3+ years of maintenance or qualified native landscaping vouchers
- Focus on conservation and equity priorities
  - Shade/cooling for communities
  - Declining species- water and land
  - Opportunities on conserved lands
    - Public parks, schoolyards
    - Private easements





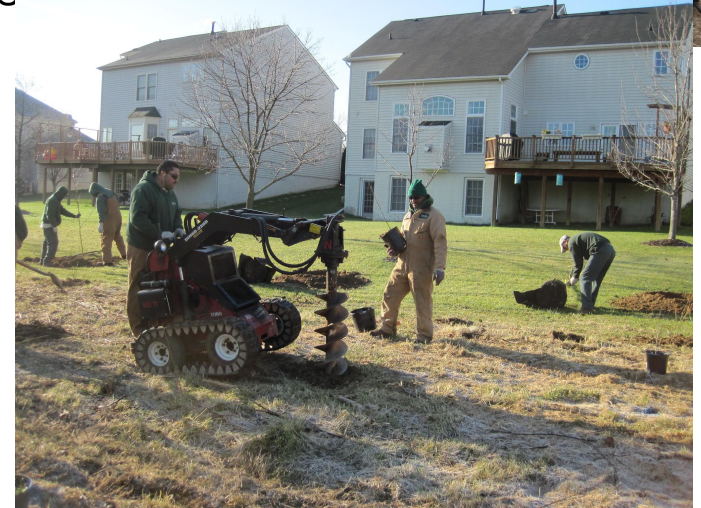
# From Planting to Growing: Maintenance Strategies

- Expand **volunteer** opportunities
  - New Maryland Tree Stewards Program
    - Urban and Community Forestry Training
  - Growing models in Conservation Community:
    - Riparian Rangers starting in MD (ACB)
    - College volunteer groups
    - “25 to Stay Alive” Pledge to Water (Casey Trees)
- **Contract** Regional Tree Care Crews
  - Support 15-year Agreements on private lands
  - Landowners opt-in
  - Requests bundled regionally
  - Build contractor capacity in invasive species control and tree care
- Link to workforce development and natural resource career pathways



# Opportunities and Challenges

- Ramp-up time needed to increase tree supply and trained contractors
  - Increases in smaller tree stock available sooner
- Building a solid foundation through staff training and community connections
  - Training and mentoring program under development
- Potential Partner and Funding Opportunities
  - Will seek funding options and pursue as they are identified



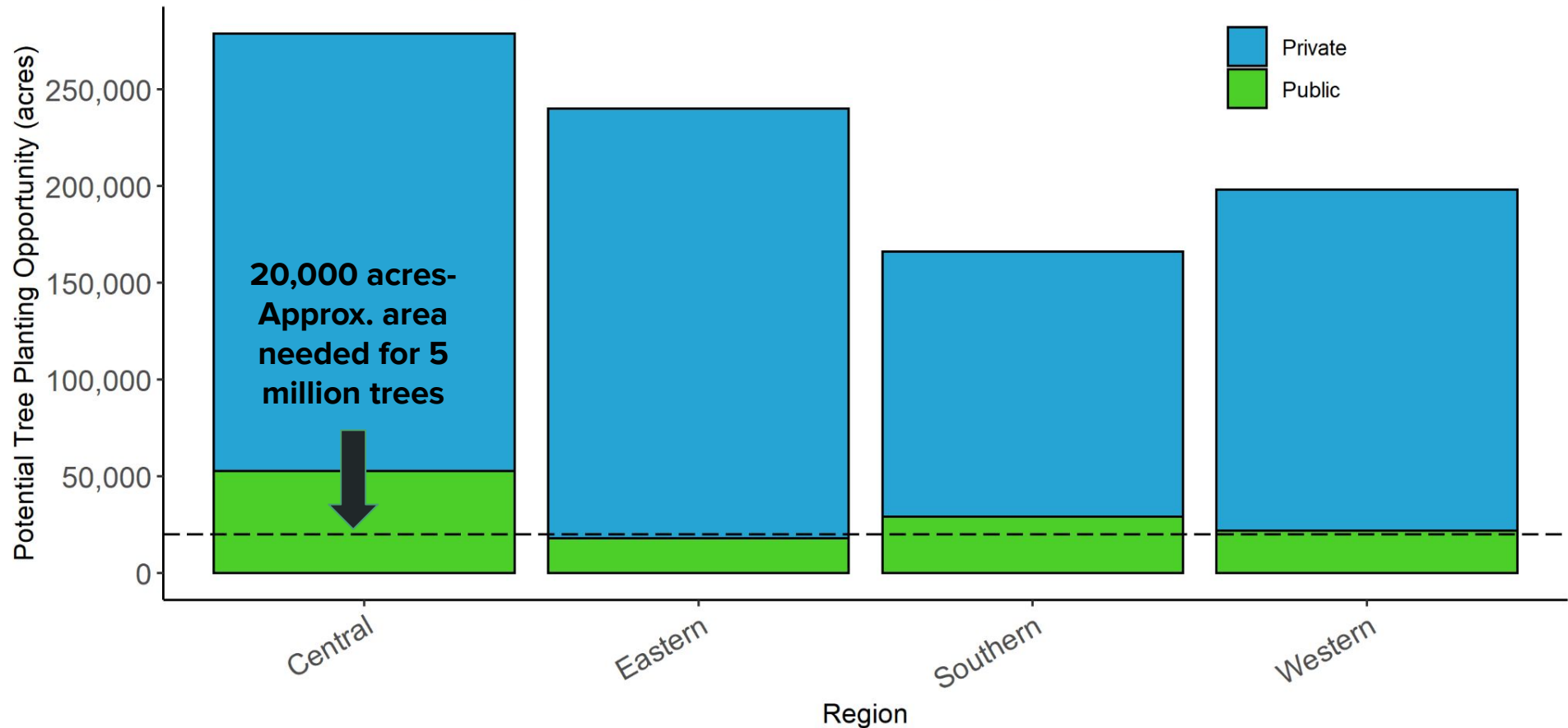


# Tree Planting Opportunity Analysis... And Challenge

- DNR conducted an analysis of land not currently in trees in 2021
  - Based 2013/14 high resolution (1-meter) land cover data for Chesapeake Bay model
  - **Excluded:**
    - Prime farmland
    - Important Bird Areas, other grassland habitats
    - Other land uses not suitable for trees (too close to structures, airports, etc.)
- Over 800,000 acres were identified as unforested outside exclusions
- Most sites expected to have conflicts from existing land use
  - Ball fields, horse pasture, drain fields, more
- Scale for 5 Million Trees: 12,000 to 20,000 acres
  - Dependent on planting density, stock size, landowner goals
- Limiting factor = **Landowner Interest**
- **NEED:**
  - **Community-based outreach and connections**
  - **Links to Health and Wellness, Cooling**
  - **All hands**



# Potential Tree Planting Opportunity by Ownership and Region



# Partnerships to Leverage Efforts and Funds



AND MORE!



BALTIMORE  
**TREE TRUST**



**American  
Forests™**



A photograph of a young tree nursery or reforestation site. In the background, a dense line of young trees stands in rows, each protected by a white plastic sleeve. The foreground is filled with tall, thin grasses and various wildflowers, including some with small white blossoms. The scene is set outdoors with a clear blue sky and a line of mature trees in the distance.

Thank you!