

Early Detection Species for Eastern MD



E D R R

Kerrie Kyde
MD DNR Natural
Resources Program



Maryland Eastern Region Statewide Eyes Training 2016

Mimosa

Albizia julibrissin

David J. Moorhead,
University of Georgia,
Bugwood.org



James H. Miller, USDA Forest Service, Bugwood.org



UGA0016013

UGA1237017



5391892

John M. Randall, The Nature Conservancy, Bugwood.org

Japanese angelica



5497634

T. Davis Sydnor, The Ohio State University, Bugwood.org



5497636

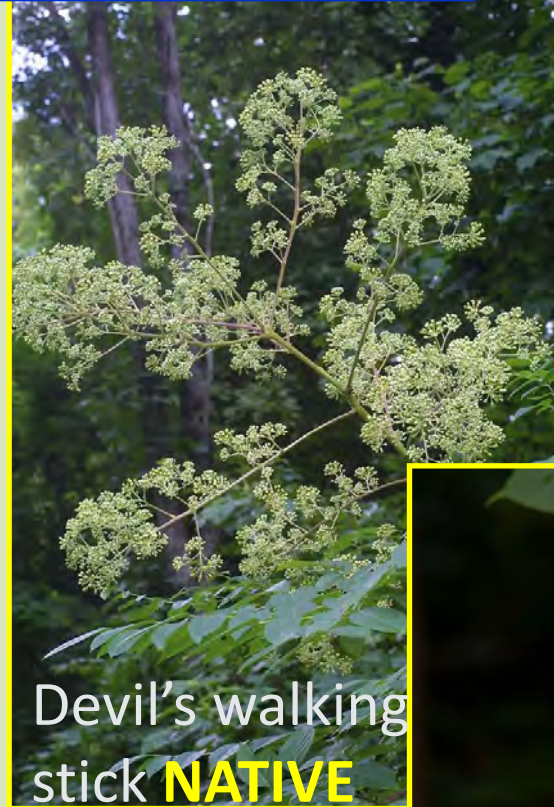
T. Davis Sydnor, The Ohio State University, Bugwood.org



Will Cook, CarolinaNature.com

Aralia elata

Flowers: *Aralia spinosa*.
By Steven Baskauf. Copyright © 2016 CC-BY-NC-SA



Devil's walking stick **NATIVE**



©2008 Will Cook

Will Cook, CarolinaNature.com

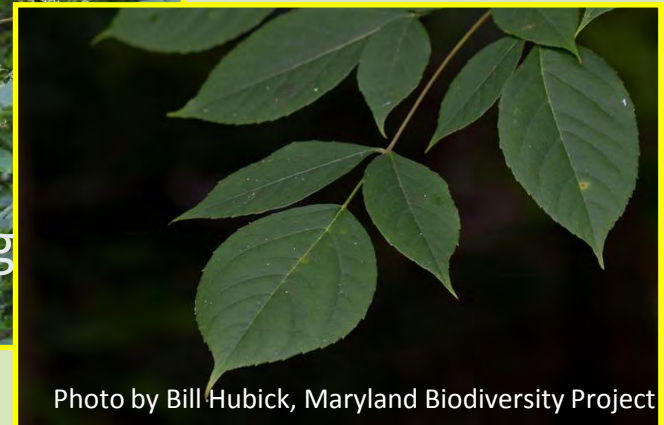


Photo by Bill Hubick, Maryland Biodiversity Project



Chuck Bargeron, University of Ga, Bugwood.org

UGA1237044



Karan A. Rawlins, Univ. of Ga, Bugwood.org



*Melia
azedarach*



5424036

Franklin Bonner, USFS (ret.), Bugwood.org



Anne Murray, Univ. of FL/IFAS Center for Aquatic and Invasive Plants

Chinaberry
Melia azedarach
Photo by Anne Murray
© 2006 University of

Ronald F. Billings, Texas A&M Forest Service, Bugwood.org



James H. Miller, USDA Forest Service, Bugwood.org

UGA2307034



5345072

David J. Moorhead, University of Georgia, Bugwood.org

Chinaberry



UGA5302030



UGA5005003

Chuck Bargeron, University of Ga, Bugwood.org

White mulberry

Morus alba



Robert Vidéki, Doronicum Kft, Bugwood.org



1550142

John Cardina, The Ohio State University, Bugwood.org

Paper mulberry

Broussonetia papyrifera



Chuck Bargeron, University of GA, Bugwood.org



UGA2308107



Karan A. Rawlins, University of Georgia

5428384



5428385

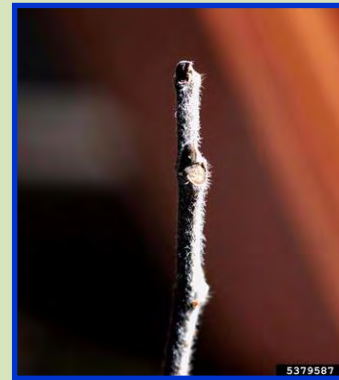


Ohio State Weed Lab, The Ohio State University, Bugwood.org



5397622

Robert Vidéki, Doronicum Kft, Bugwood.org



5379587

James H. Miller, USDA Forest Serv., Bugwood.org



Red mulberry
NATIVE

5469694

David Stephens, Bugwood.org



Rebekah D. Wallace, UGA. Bugwood.org



5349036

Amy Richard, University of Florida, Bugwood.org

Amur corktree *Phellodendron amurense*



Leslie Mehrhoff, University of Conn, Bugwood.org



Chris Evans, University of Illinois, Bugwood.org



Patrick Breen, Oregon State University, Bugwood.org



Richard Webb, Bugwood.org



Richard Webb, Bugwood.org

All other photos by Nancy Loewenstein,
Auburn University, Bugwood.org L

Leatherleaf mahonia

*Mahonia
bealei*

Robert Videki,
Doronicum Kft.,
Bugwood.org



Nancy Dagley, USDI National Park Service, Bugwood.org



James H. Miller, USDA
Forest Service,
Bugwood.org



*Nandina
domestica*

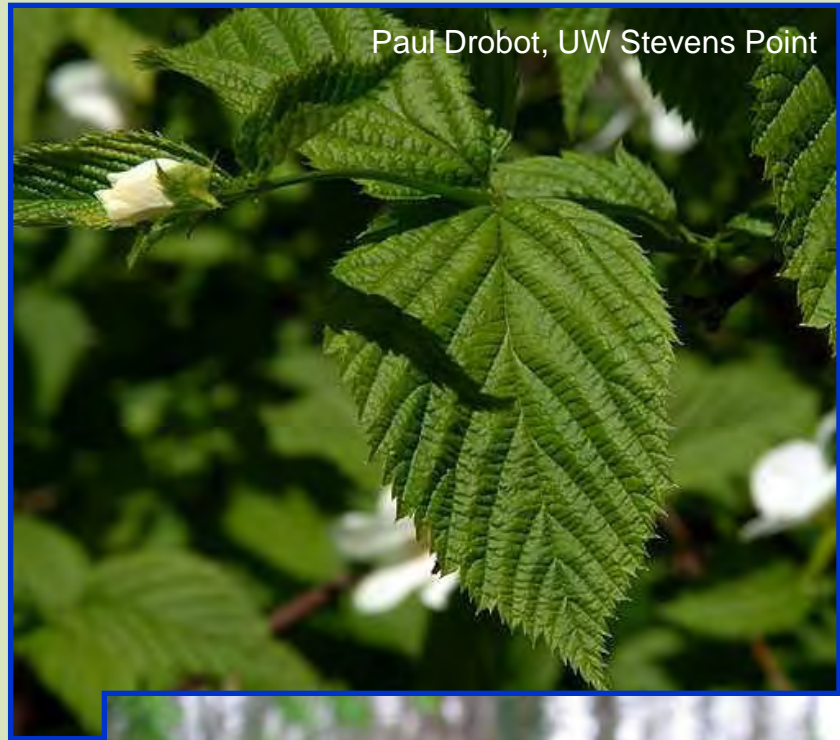
IPAC Tier 2 (proposed)



Heavenly bamboo

Jetbead

Rhodotypos scandens



Leslie J. Mehrhoff, University of Connecticut, Bugwood.org



© Les Mehrhoff, 2008-2010
www.discoverlife.org



Linden viburnum

*Viburnum
dilatatum*



Doug Manning, NPS, Bugwood.org



<http://viburnum.com/viburnum-dilatatum-linden-viburnum/>

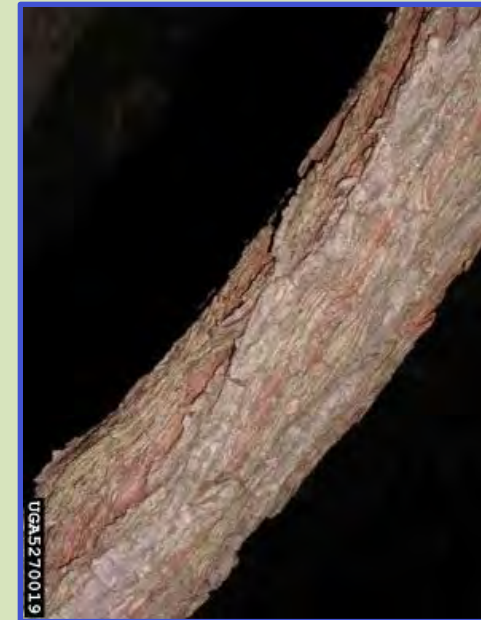
Porcelainberry

Ampelopsis

brevipedunculata



http://www.hort.uconn.edu/plants/a/amp_bre



UGA5270019

Leslie J. Mehrhoff, University of Connecticut, Bugwood.org

All other photos by Kerrie L. Kyde



Jil Swearingen, NPS, Bugwood.org

UGA0580071

Chocolate vine

Akebia quinata

Nancy Loewenstein, Auburn University, Bugwood.org

James H. Miller, USDA Forest Service, Bugwood.org



Leslie J. Mehrhoff, University of Connecticut, Bugwood.org-

Bushkiller

Cayratia japonica

Native Virginia creeper



Photos 2, 4 and 6: Robert J. Richardson, North Carolina State Univ, Bugwood.org

Photos 1, 3 and 5: Peter Stango, MD DNR Natural Heritage Program

UGA210564

Poison hemlock

Conium maculatum



Linh Phu, MD DNR

© K.L. Kyde 2015

e 2008

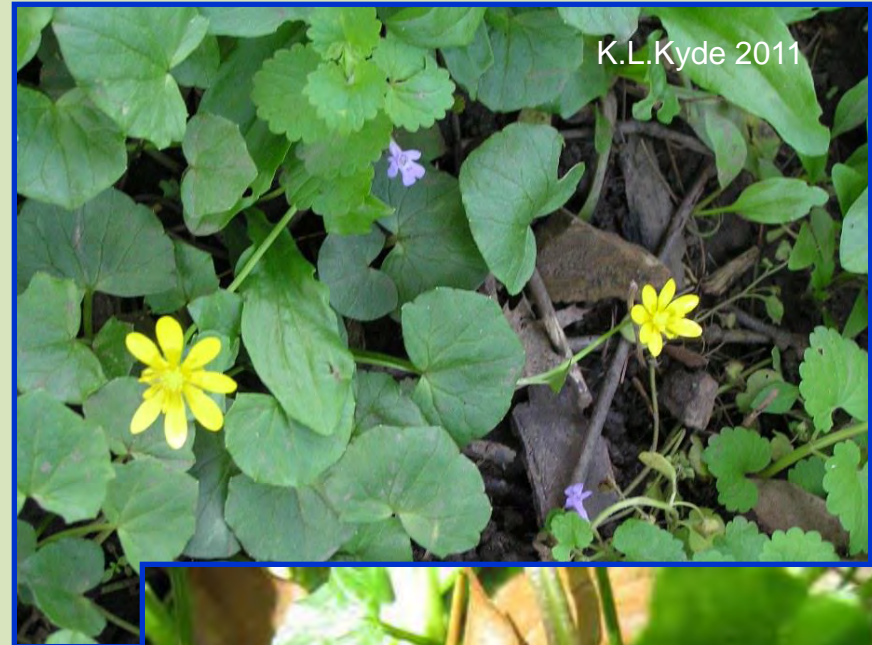
© K.L. Kyde 2008

Linh Phu, MD DNR

Lesser celandine

Ficaria verna

IPAC Tier 1



Other photos by Leslie J. Mehrhoff, University of Connecticut

Cogon grass

Imperata cylindrica

Karan A. Rawlins, University of Georgia, Bugwood.org

Chris Evans, Illinois Wildlife Action Plan, Bugwood.org



John D. Byrd, Mississippi State Univ., Bugwood.org

<http://www.cogongrass.org/cogongrassid.pdf>



Chris Evans, Illinois Wildlife Action Plan, Bugwood.org



Charles T. Bryson, USDA ARS, Bugwood.org



© M. L. Atwater

Mark Atwater, Weed Control Unlimited, Inc., Bugwood.org

Britt Slattery, US Fish & Wildlife Service,
Bugwood.org



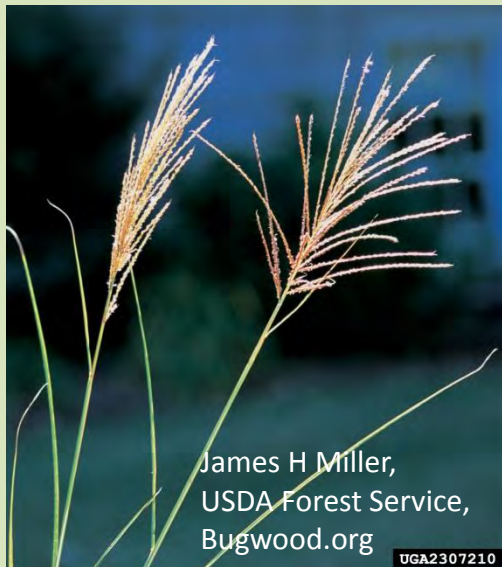
UGA0016162

James H Miller, USDA Forest Service, Bugwood.org



© K.L. Kyde 2007

Chinese silvergrass



James H Miller,
USDA Forest Service,
Bugwood.org

UGA2307210

*Miscanthus
sinensis*



UGA1346078



UGA1346076

Marsh dewflower

Murdannia keisak

Commelina communis →



UGA5062048

Linda Lee, University of South Carolina, Bugwood.org



UGA5062051

Jim Stasz, hosted by the USDA-NRCS PLANTS Database



© K.L. Kyde 2015

Native *Commelina virginica* →

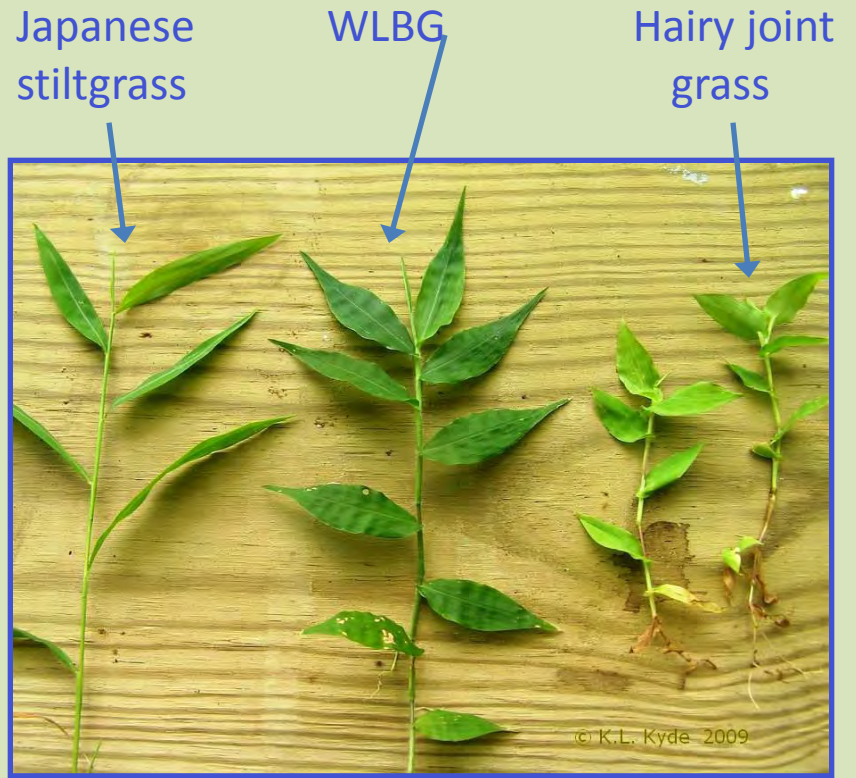


© Jim Stasz

Wavyleaf basketgrass

*Oplismenus
undulatifolius*





Waterwheel

Aldrovanda vesiculosa



All photos courtesy of Robert Floyd, Colorado State University, CEMML

Alligatorweed

Alternanthera philoxeroides



© John Hall

John Hall, Norton-Brown Herbarium, UMD



© Larry Allain

Larry Allain, hosted by the USDA-NRCS PLANTS Database



John Hall

John Hall, Norton-Brown Herbarium, UMD

Water hyacinth

Eichhornia crassipes



Leslie J. Mehrhoff,
University of
Connecticut,
Bugwood.org



Forest and Kim Starr, Starr
Environmental, Bugwood.org



Josh Hillman, FloridaNature.org, Bugwood.org



Willey Durden, USDA Agricultural Research Service, Bugwood.org

Go out and find 'em!

T H A N K S !



Kerrie Kyde

kerrie.kyde@maryland.gov

301/948-8243