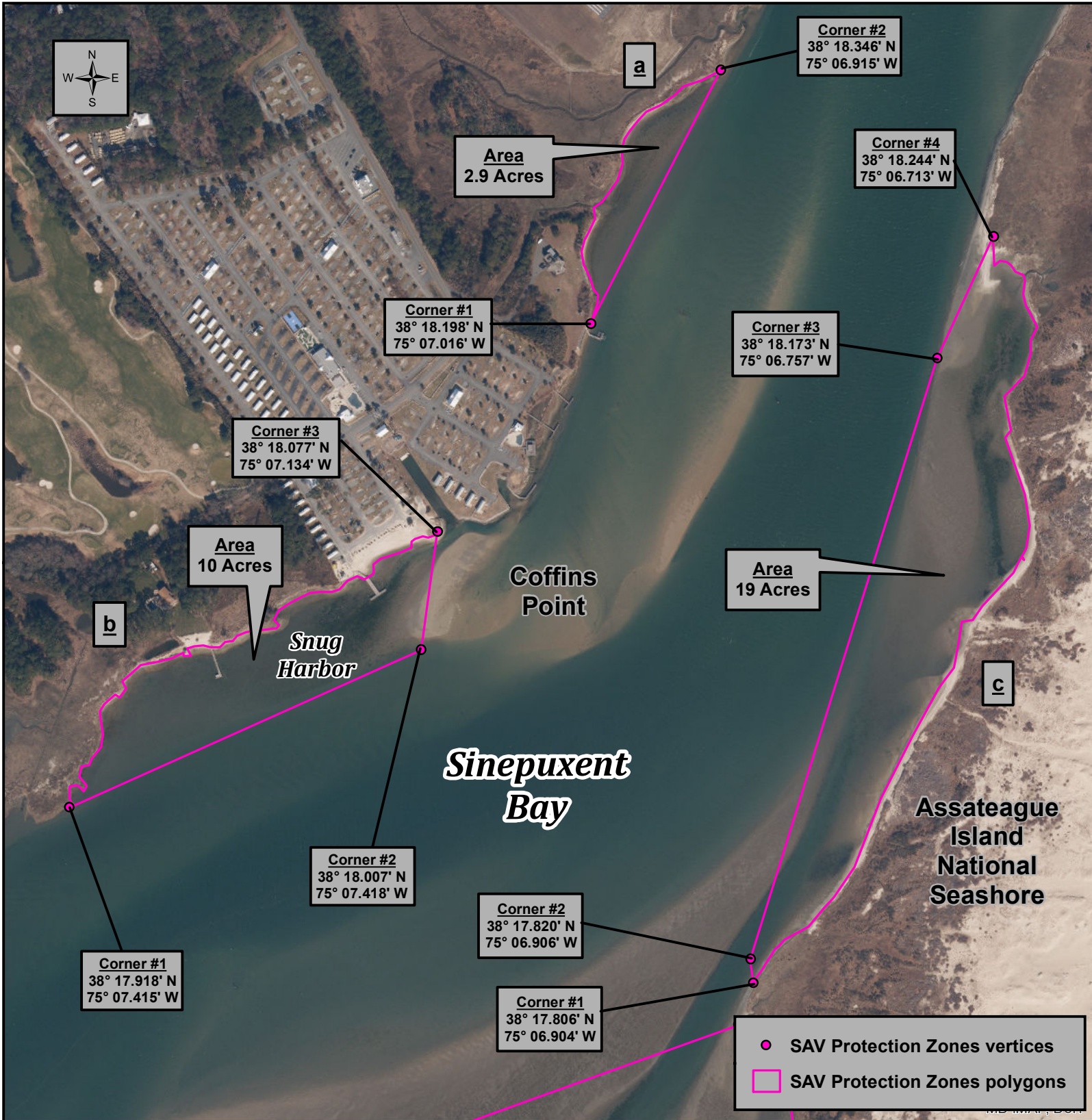


SAV Protection Zones - COMAR 08.02.01.12(5)(a,b & c)

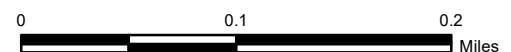
Worcester County - near Ocean City Municipal Airport and Snug Harbor



Wes Moore
Governor
Aruna Miller
Lt. Governor

Josh Kurtz
Secretary
David Goshorn
Deputy Secretary

effective December 11th, 2023



FOR INTERACTIVE MAP APPLICATION PLEASE SEE --
DNR.MARYLAND.GOV/FISHERIES/PAGES/ISHHELLFISH/MAIN.ASPX

Projection:
Lambert Conformal Conic
North American Datum 1983