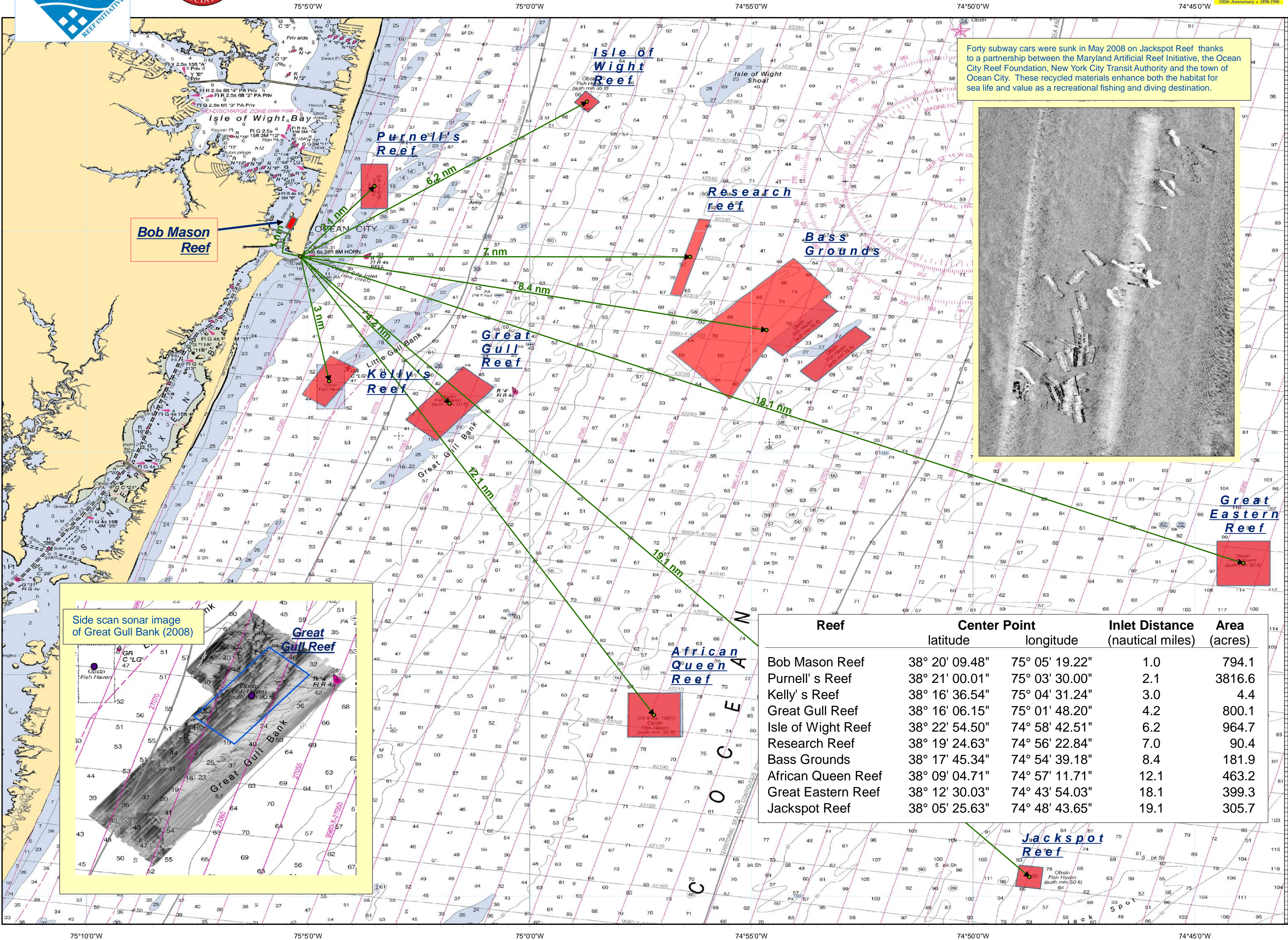
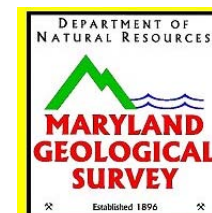
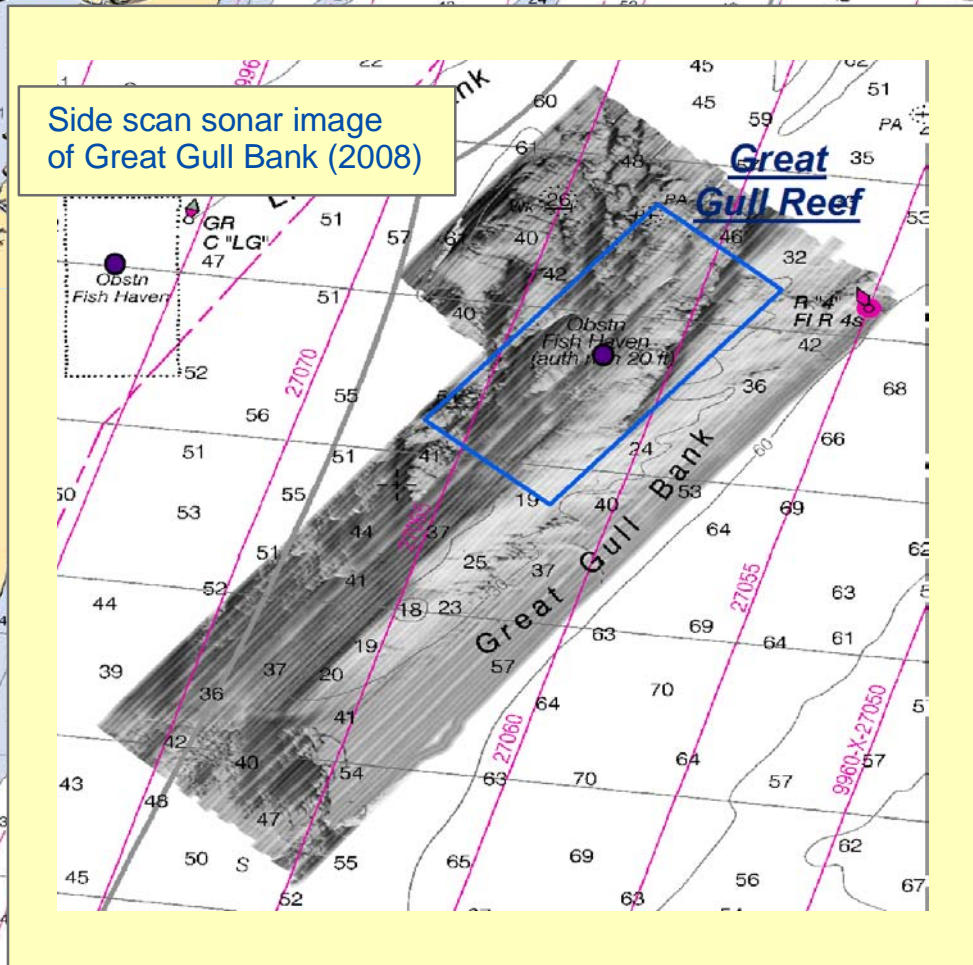




MARI / Ocean City Reef Foundation Reefs



Forty subway cars were sunk in May 2008 on Jackspot Reef thanks to a partnership between the Maryland Artificial Reef Initiative, the Ocean City Reef Foundation, New York City Transit Authority and the town of Ocean City. These recycled materials enhance both the habitat for sea life and value as a recreational fishing and diving destination.



Reef	Center Point		Inlet Distance	Area
	latitude	longitude	(nautical miles)	(acres)
Bob Mason Reef	38° 20' 09.48"	75° 05' 19.22"	1.0	794.1
Purnell's Reef	38° 21' 00.01"	75° 03' 30.00"	2.1	3816.6
Kelly's Reef	38° 16' 36.54"	75° 04' 31.24"	3.0	4.4
Great Gull Reef	38° 16' 06.15"	75° 01' 48.20"	4.2	800.1
Isle of Wight Reef	38° 22' 54.50"	74° 58' 42.51"	6.2	964.7
Research Reef	38° 19' 24.63"	74° 56' 22.84"	7.0	90.4
Bass Grounds	38° 17' 45.34"	74° 54' 39.18"	8.4	181.9
African Queen Reef	38° 09' 04.71"	74° 57' 11.71"	12.1	463.2
Great Eastern Reef	38° 12' 30.03"	74° 43' 54.03"	18.1	399.3
Jackspot Reef	38° 05' 25.63"	74° 48' 43.65"	19.1	305.7