

Cub Hill Forestry Tower

Managing Agency: Forest Service

County: Baltimore

DNR Land Unit: Baltimore County Project Office, Cub Hill Ranger Station

Location: Carney/Cub Hill, 9405 Old Harford Road

Access: On the left side of Old Harford Road, north of Summit Avenue

Base Elevation: 480 above mean sea level

Tax Map and Parcel: Tax Map 71, Parcel 481

Size of Unit: 2.18 acres

Liber/Folio: 1243/292

Deed Date: 24 July 1942

Acquired From: Mary and Frank DeSantis

Date of Tower Installation: Unknown

Tower Height: 125 feet

Condition: The steel structure is in good condition. The cab has been removed and a wood deck with a railing has been installed. Monitoring and communications equipment has been mounted on the tower. Office and storage buildings range from fair to good condition.

Sensitive Features: None

Current Use: The platform is being used for long-term research by the Center for Urban Environmental Research and Education and the US Forest Service's Neighborhood Ecosystem Project in cooperative effort with DNR Forest Service. Climatological and atmospheric monitoring equipment is mounted on tower.

Potential Uses: Communications, climatological/atmospheric monitoring, ecological research

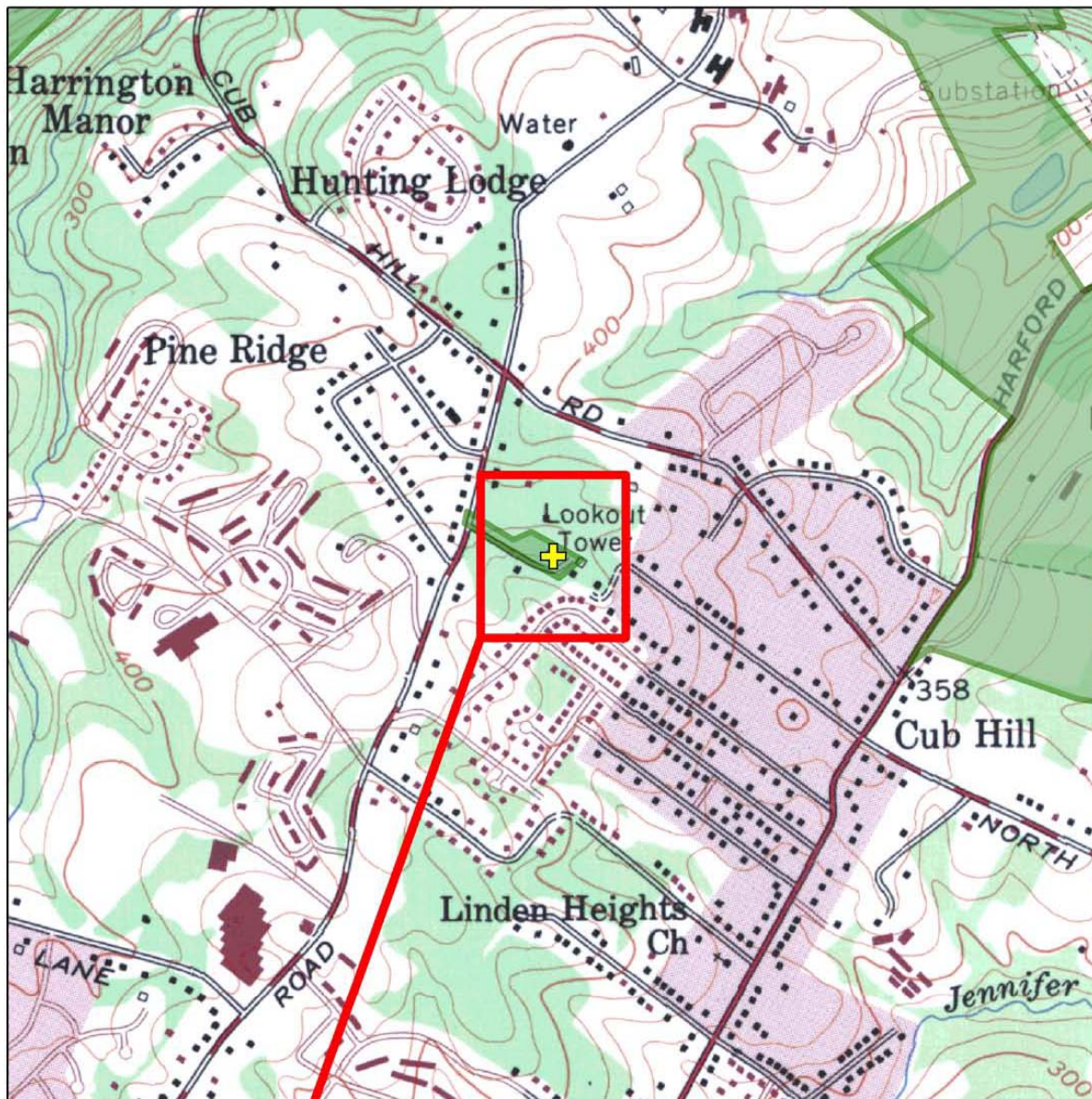
Recommended Disposition: Retain as regional forest ranger station, communications facility and central platform for ecological/ atmospheric study

Other Notes: The deed contains no reverter clause. The State does own the access corridor, but deed grants right of ingress/egress to previous owners to access their remaining land and specifies that access "roadway is to be not less than 16 feet in width."

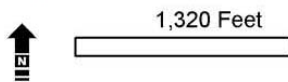
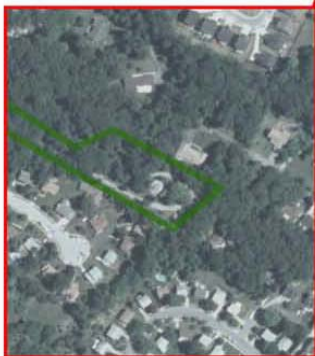


Cub Hill Forestry Tower Complex

Cub Hill



Enlarged with 2005 Imagery



This map was created for general planning purposes. Public Lands Policy and Planning compiled it from data sets available at the time of analysis; current conditions may differ.

Apr 10, 2007

Legend

-  Forest Tower Property
-  DNR Land

