

Hollofield Forestry Tower

Managing Agency: Park Service

County: Howard County

DNR Land Unit: Patapsco Valley State Park

Location: NE edge of Ellicott City

Access: Church Lane

Base Elevation: 550 above mean sea level

Tax Map and Parcel: Tax Map 18, no parcel number provided

Size of Unit: 9.43 acres

Liber/Folio: 153/331

Deed Date: December 5, 1935

Acquired From: Emma and William Thompson

Date of Tower Installation: Unknown

Description: The forestry tower has been removed and replaced with a modern communications tower. The fenced area at the tower's base includes a propane tank, emergency generator, and a concrete block equipment building.

Sensitive Features: None

Condition: The tower has been removed and is presently used as observation platform at Merkle NRMA.

Current Use: Public parkland and communication tower site

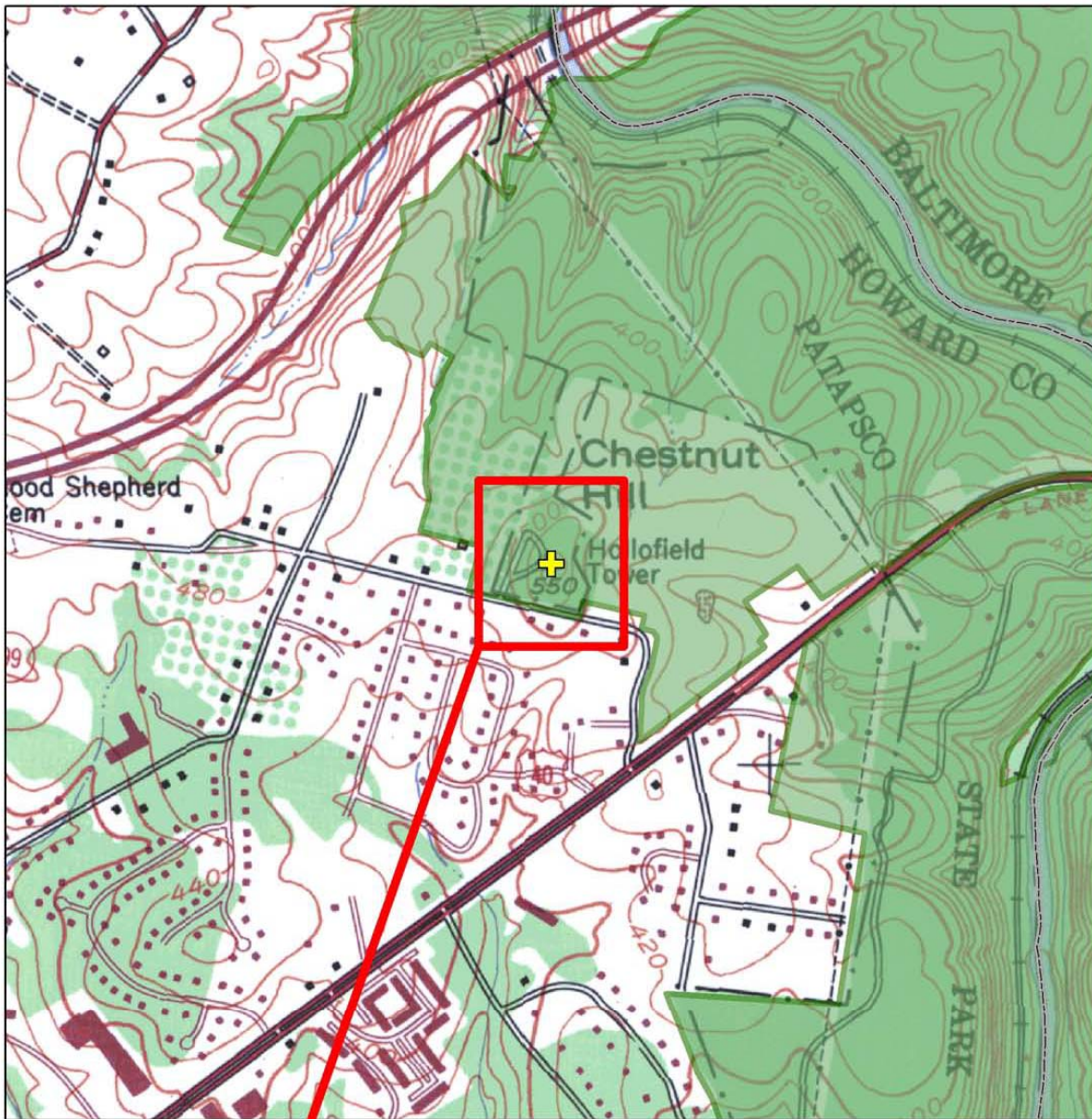
Potential Uses: Public parkland and communications site

Recommended Disposition: Retain as part of Patapsco State Park and as a communications facility.

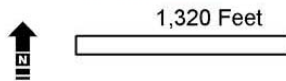


Hollofield Forestry Tower Site



Hollofield

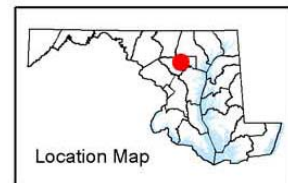


Enlarged with 2005 Imagery



Legend

-  Forest Tower Property
-  DNR Land



This map was created for general planning purposes. Public Lands Policy and Planning compiled it from data sets available at the time of analysis; current conditions may differ.

Apr 10, 2007