

## Lamb's Knoll Forestry Tower Property

**Managing Agency:** Park Service

**County:** Frederick County

**DNR Land Unit:** South Mountain State Park

**Location:** Lamb's Knoll, Washington/Frederick county line.

**Access:** Paved unnamed park road accessing site, south from Reno Monument Road.

**Base Elevation:** 1758 feet above mean sea level

**Size of Property:** 134.5 Acres

**Liber/Folio:** 659/654

**Deed Date:** 29 April 1959

**Acquired From:** Mary and Teddy Beachley

**Current Use:** Important communications site with State monopole tower

**Date of Tower Installation:** Original Forestry Tower erected in 1934

**Description:** The original 91 foot tall self-supporting lattice tower was removed in 2006 and replaced with a modern monopole. At the base of the new tower are several equipment buildings, emergency generators and a propane tank, all enclosed in a chain link security fence.

**Sensitive features:** Site overlooks national battlefields and is within meters of the Appalachian Trail (AT). The original tower was determined by MHT not to be historically significant. The tower and equipment building were removed in 2006. To minimize visibility from the AT, the fence is painted black and plastic slats have been inserted in the links of the fence.

**Condition:** The forestry tower has been removed, the site now houses a modern communications complex.

**Potential Uses:** Critical site for regional/local communications equipment

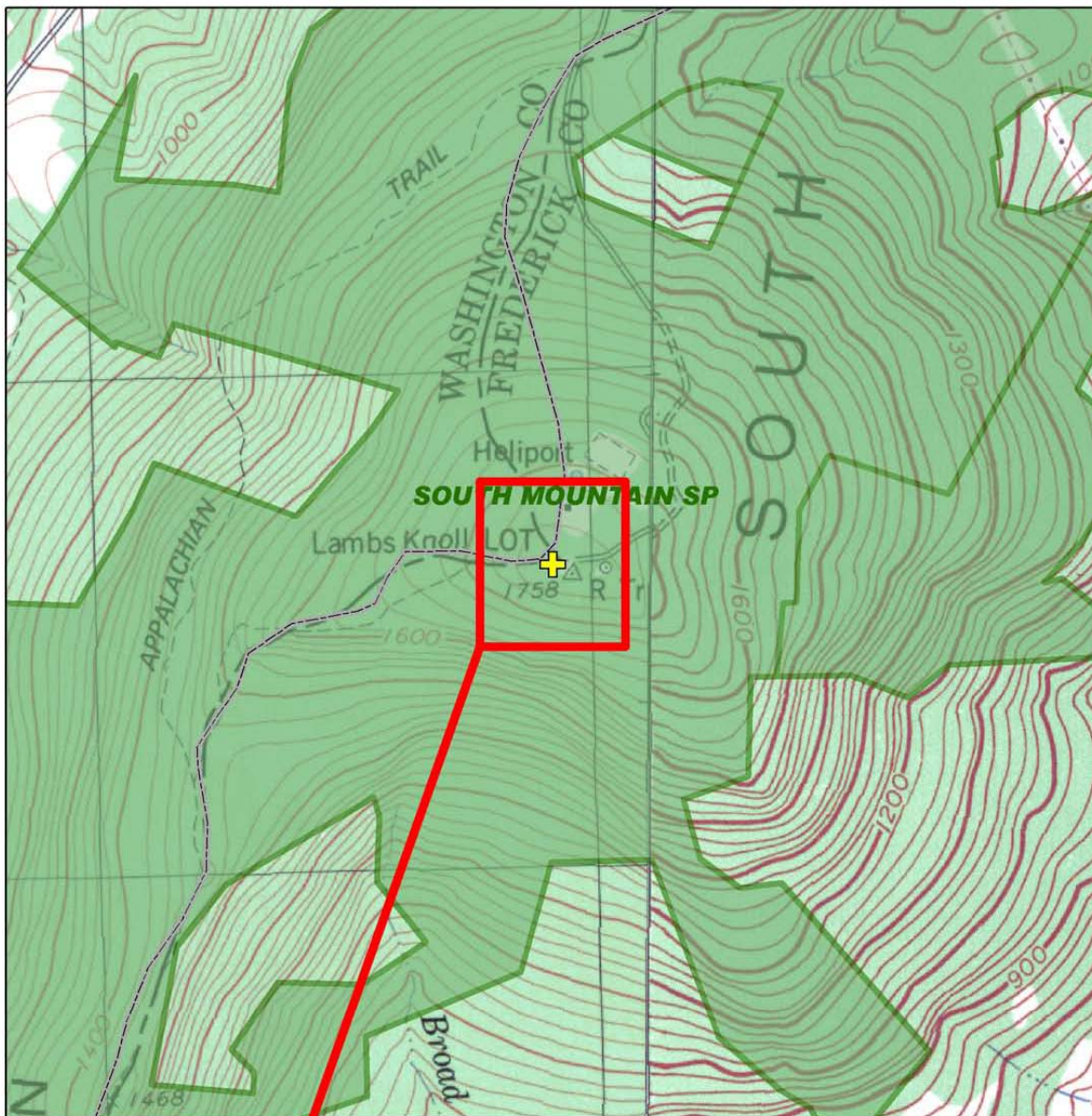
**Recommended Disposition:** Retain as Public Service communications center

**Other Notes:** During review of proposed new State tower, citizen and agency opposition to original tower was expressed due to perceived adverse visual impact from the National Battlefields in the valley below. All communications equipment from original tower was transferred to the new State tower. Since the tower complex is within the AT Corridor, new construction must be coordinated with NPS and DNR's other AT Partners. An adjacent private communications tower was removed in 2000.



**Lamb's Knoll Forestry Tower Complex. Original forestry tower (shown in photograph above) was removed in 2006.**

# Lamb's Knoll



Enlarged with 2005 Imagery



1,320 Feet



This map was created for general planning purposes. Public Lands Policy and Planning compiled it from data sets available at the time of analysis; current conditions may differ.

Apr 10, 2007

## Legend

-  Forest Tower Property
-  DNR Land

