

## Thayerville Forestry Tower

**Managing Agency:** Park Service

**County:** Garrett

**DNR Land Unit:** Deep Creek Lake State Park

**Base Elevation:** 3021 feet above mean sea level

**Tax Map and Parcel:** Map 58, no parcel number

**Size of Unit:** Part of Deep Creek Lake State Park

**Liber/Folio:** 197/443

**Deed Date:** July 26, 1956

**Acquired From:** State of Maryland to Department of Forest and Parks

**Date of Tower Installation:** 1921

**Description:** The tower is located within a fenced compound. Also sharing this compound is a modern communications tower owned and operated by West Virginia Public television and several associated equipment buildings. A variety of commercial and public service users are on the WVA tower and the DNR forestry tower.

**Sensitive Features:** Park Service has applied to have the tower placed on the National Register of Historic Lookout Towers.

**Condition:** The tower structure is in good shape. The steps and cabin are in fair condition. Both equipment buildings are in good shape.

**Current Use:** Park Management occasionally allows park visitor access to the tower for interpretive purposes. Most of the communication equipment has been moved to adjacent public tower. A public hiking trail brings visitors to the tower and a plaque commemorating the tower will be mounted along the trail.

**Potential Uses:** Communications site and continued controlled public access

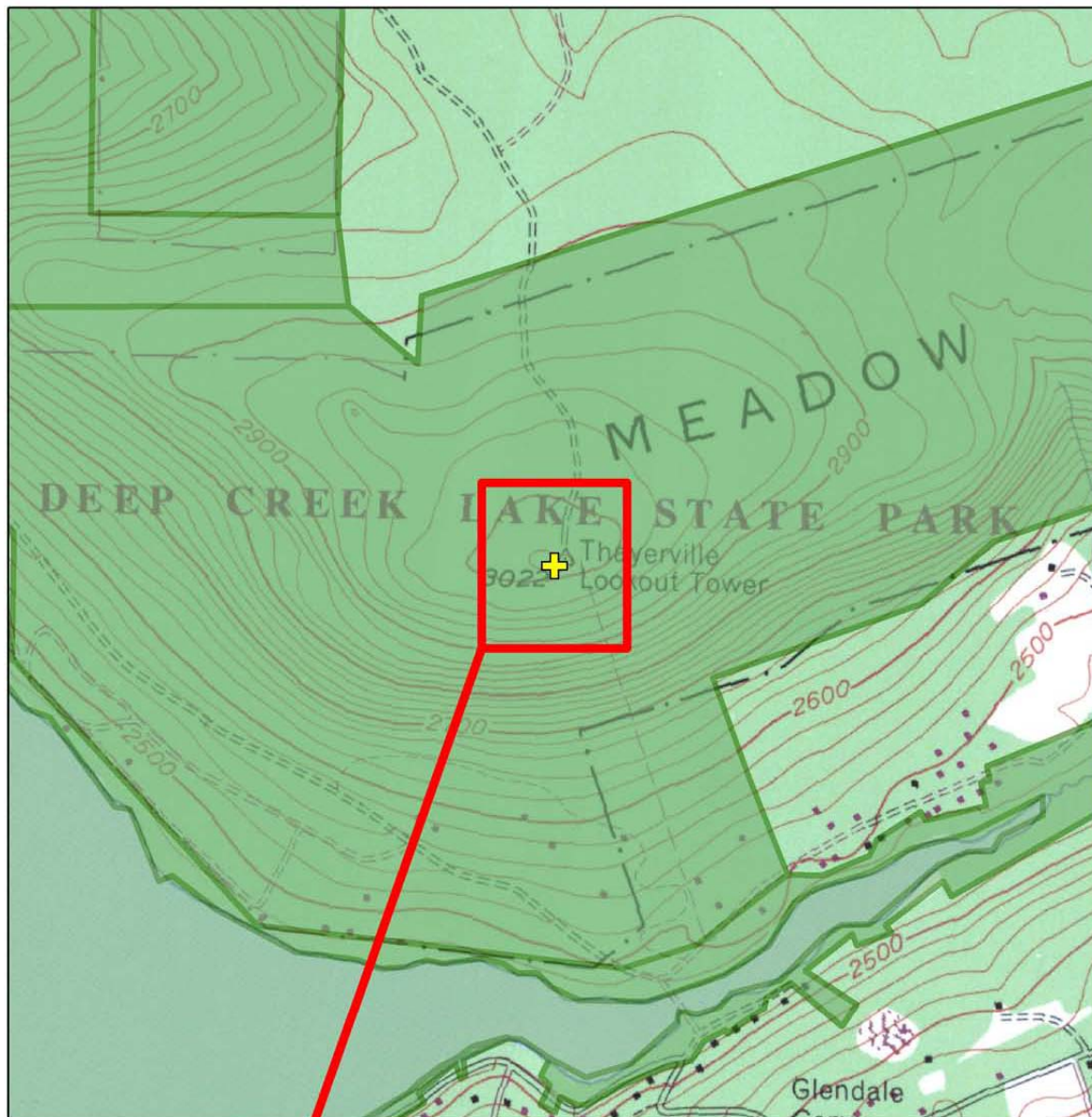
**Recommended Disposition:** Retain as a park amenity and potential communications facility

**Other Notes:** Located on LU land; otherwise, no reverter clause. Tower was moved to its present location from a lower elevation to the northeast some years ago.

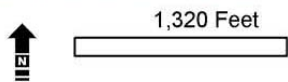


### Thayerville Forestry Tower Complex

# Thayerville



Enlarged with 2005 Imagery



This map was created for general planning purposes. Public Lands Policy and Planning compiled it from data sets available at the time of analysis; current conditions may differ.

Apr 10, 2007

## Legend

- Forest Tower Property
- DNR Land

