





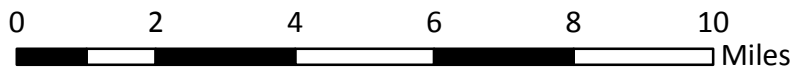


**Legend**

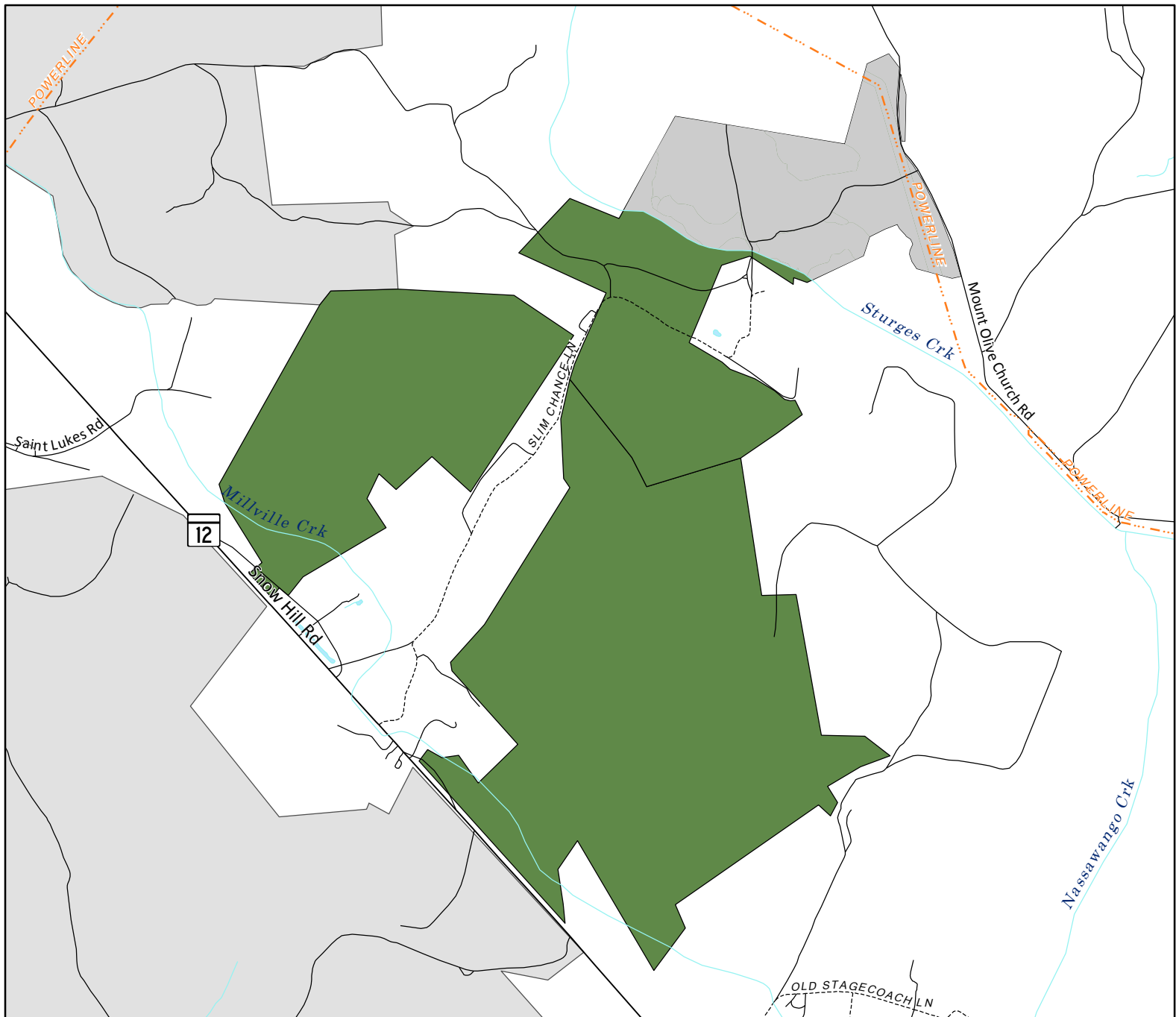
-  Office
  -  Pocomoke State Forest
  -  State Park
  -  Wildlife Management Area
- Chesapeake Forest**
-  Public Hunting Tracts
  -  Not Open for Public Hunting



State Forest Office: 1-410-632-3732  
 Forest Watch: 1-800-825-7275  
 Natural Resources Police  
 (Emergencies): 1-410-260-8888

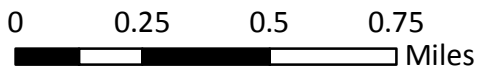
**GENERAL LOCATION MAP**  
 See Individual Maps For Detail





**Legend**

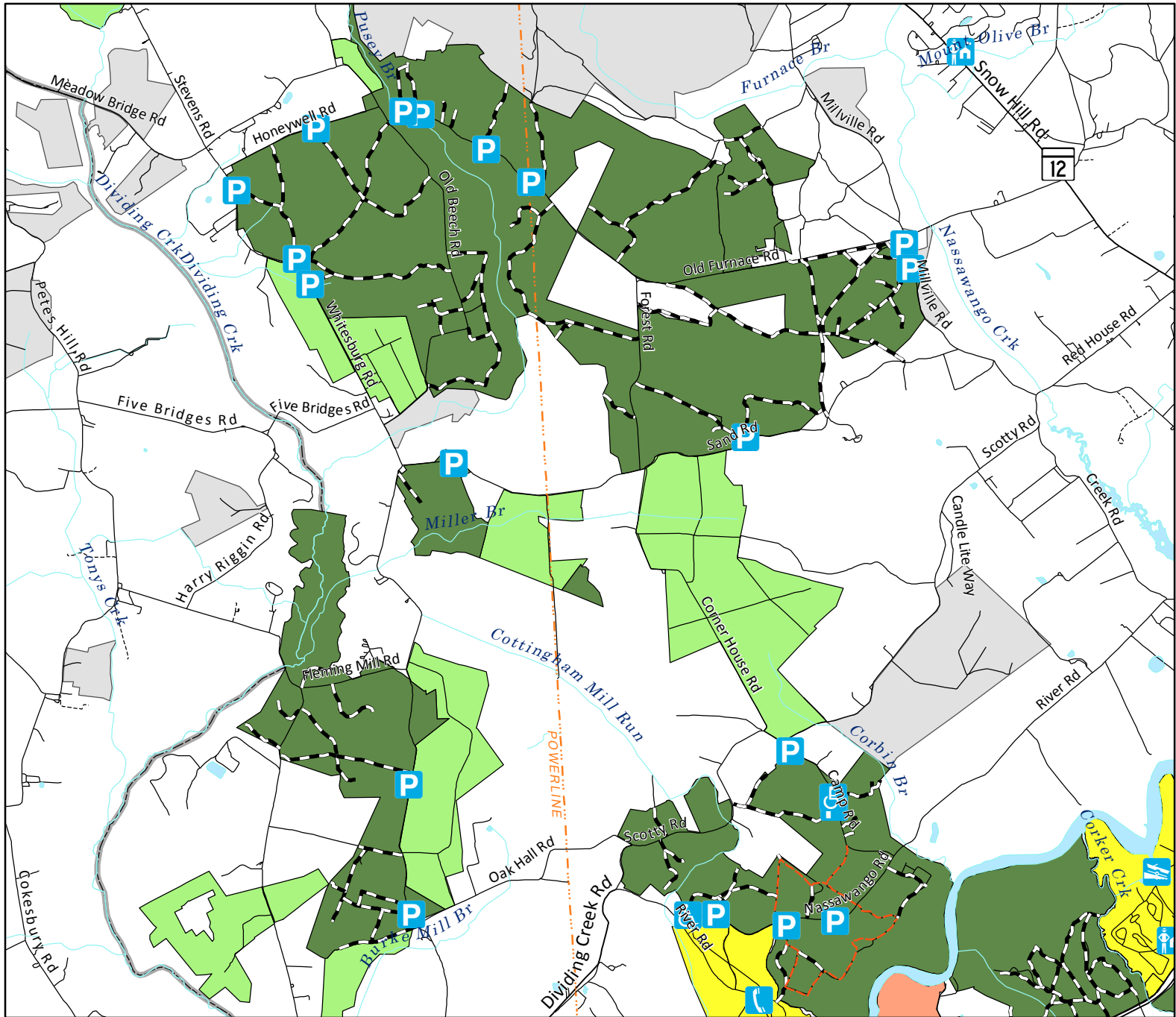
- |                       |                        |                          |                             |
|-----------------------|------------------------|--------------------------|-----------------------------|
| <b>Trails</b>         |                        | Boat Ramp                | Pocomoke State Forest       |
| Blue Bike Trail       | Disabled Hunter Access | State Park               | Wildlife Management Area    |
| Green Bike Trail      | Office                 | <b>Chesapeake Forest</b> |                             |
| Yellow Bike Trail     | Parking Area           | Public Hunting Tracts    | Not Open for Public Hunting |
| Forest Road           | Public Phone           |                          |                             |
| Road                  |                        |                          |                             |
| Milburn Landing Trail |                        |                          |                             |
| Other Trail           |                        |                          |                             |



State Forest Office: 1-410-632-3732  
 Forest Watch: 1-800-825-7275  
 Natural Resources Police  
 (Emergencies): 1-410-260-8888

**POCOMOKE SF NORTH**





**Legend**

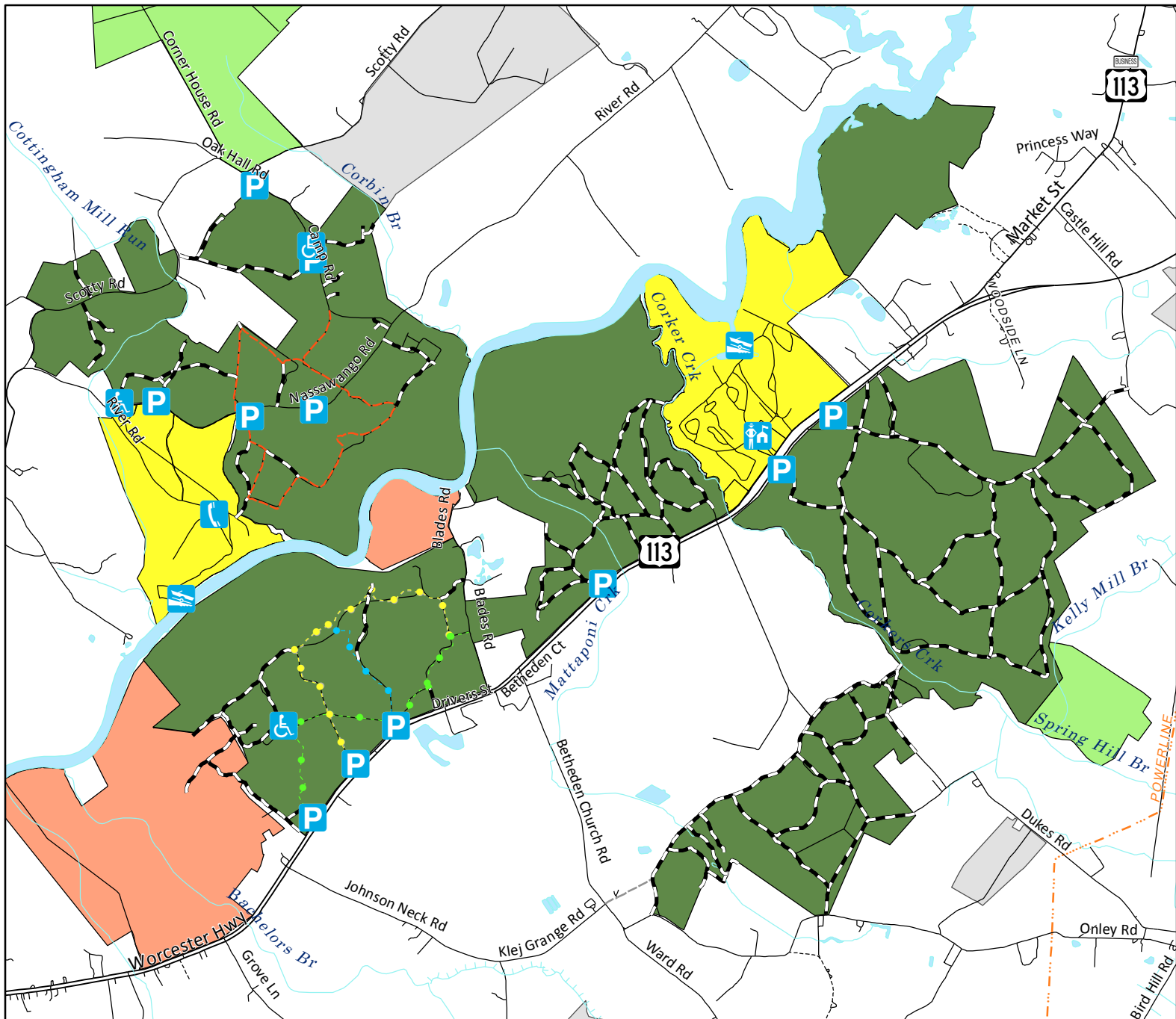
- |                       |                        |                             |
|-----------------------|------------------------|-----------------------------|
| <b>Trails</b>         | Boat Ramp              | Pocomoke State Forest       |
| Blue Bike Trail       | Disabled Hunter Access | State Park                  |
| Green Bike Trail      | Office                 | Wildlife Management Area    |
| Yellow Bike Trail     | Parking Area           | <b>Chesapeake Forest</b>    |
| Forest Road           | Public Phone           | Public Hunting Tracts       |
| Milburn Landing Trail |                        | Not Open for Public Hunting |
| Other Trail           |                        |                             |
| Road                  |                        |                             |



State Forest Office: 1-410-632-3732  
 Forest Watch: 1-800-825-7275  
 Natural Resources Police  
 (Emergencies): 1-410-260-8888

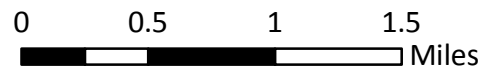
**POCOMOKE SF CENTRAL**





**Legend**

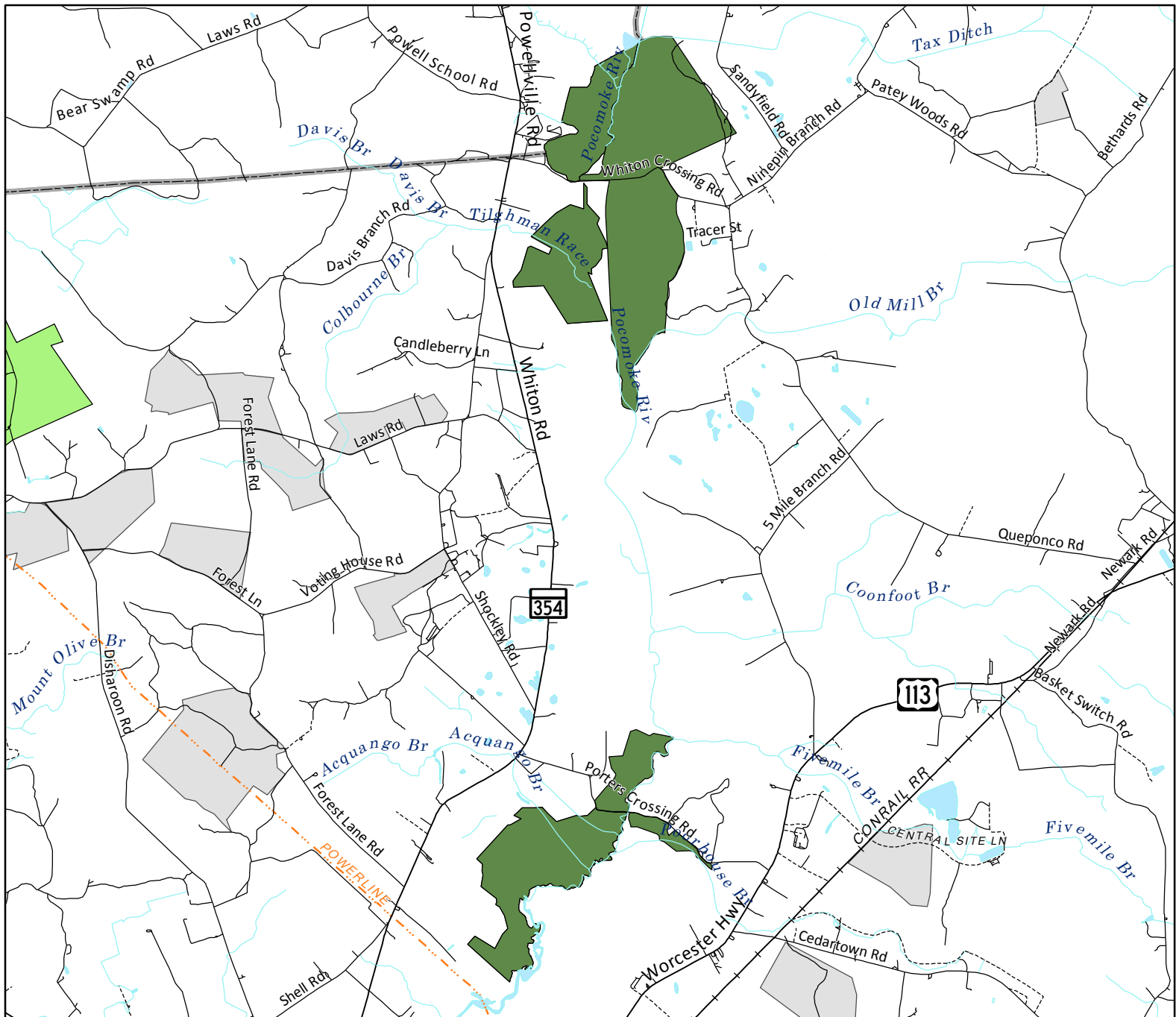
- |                       |                        |                             |
|-----------------------|------------------------|-----------------------------|
| <b>Trails</b>         | Boat Ramp              | Pocomoke State Forest       |
| Blue Bike Trail       | Disabled Hunter Access | State Park                  |
| Green Bike Trail      | Office                 | Wildlife Management Area    |
| Yellow Bike Trail     | Parking Area           | <b>Chesapeake Forest</b>    |
| Forest Road           | Public Phone           | Public Hunting Tracts       |
| Milburn Landing Trail |                        | Not Open for Public Hunting |
| Other Trail           |                        |                             |
| Road                  |                        |                             |



State Forest Office: 1-410-632-3732  
 Forest Watch: 1-800-825-7275  
 Natural Resources Police  
 (Emergencies): 1-410-260-8888

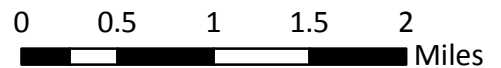
**POCOMOKE SF SOUTH**





**Legend**

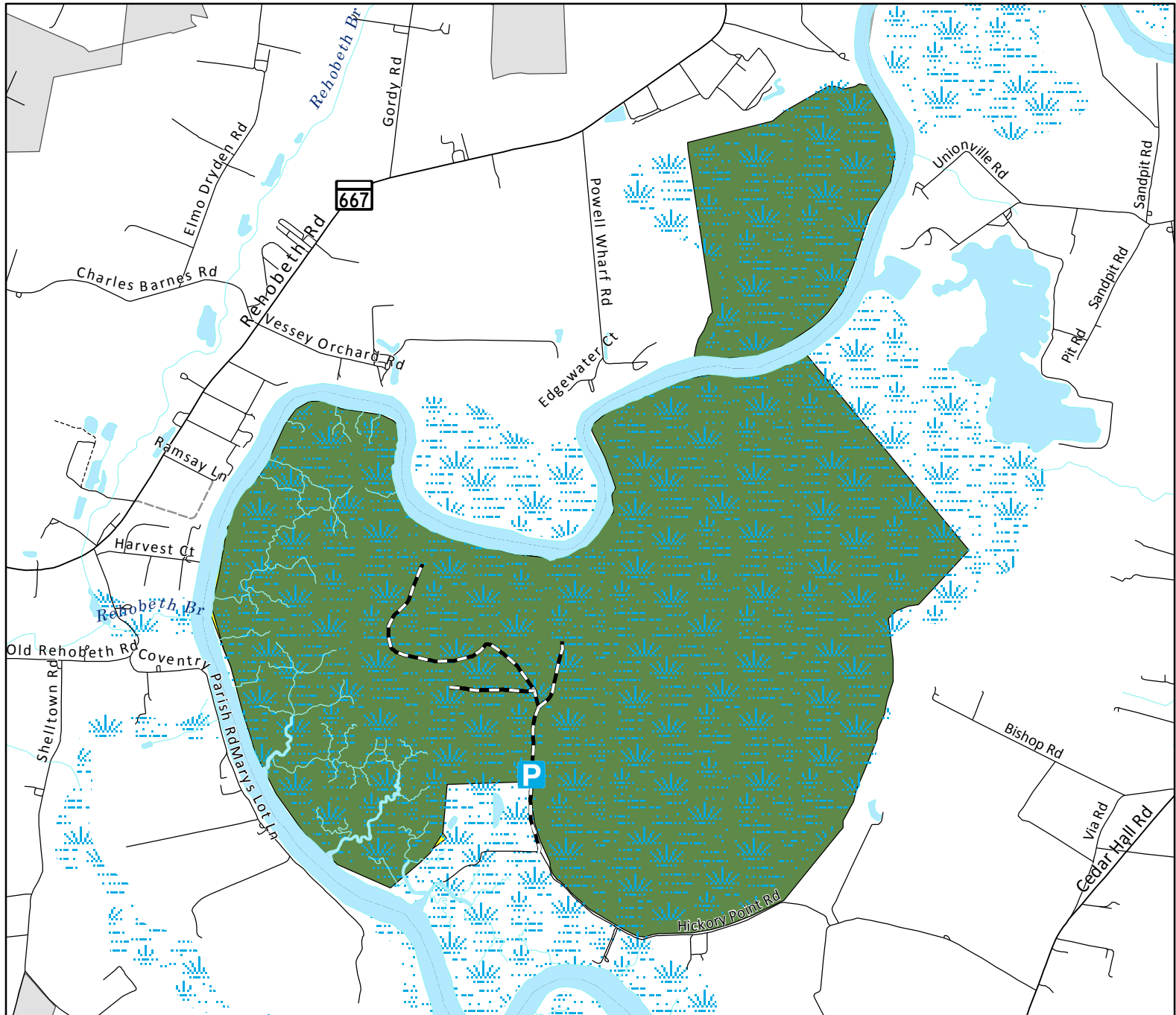
- |                       |                        |                             |
|-----------------------|------------------------|-----------------------------|
| <b>Trails</b>         | Boat Ramp              | Pocomoke State Forest       |
| Blue Bike Trail       | Disabled Hunter Access | State Park                  |
| Green Bike Trail      | Office                 | Wildlife Management Area    |
| Yellow Bike Trail     | Parking Area           | <b>Chesapeake Forest</b>    |
| Forest Road           | Public Phone           | Public Hunting Tracts       |
| Milburn Landing Trail |                        | Not Open for Public Hunting |
| Other Trail           |                        |                             |
| Road                  |                        |                             |



State Forest Office: 1-410-632-3732  
 Forest Watch: 1-800-825-7275  
 Natural Resources Police  
 (Emergencies): 1-410-260-8888

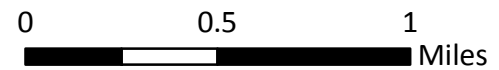
**POCOMOKE SF EAST**





**Legend**

- |                       |                        |                             |
|-----------------------|------------------------|-----------------------------|
| <b>Trails</b>         | Boat Ramp              | Pocomoke State Forest       |
| Blue Bike Trail       | Disabled Hunter Access | State Park                  |
| Green Bike Trail      | Office                 | Wildlife Management Area    |
| Yellow Bike Trail     | Parking Area           | <b>Chesapeake Forest</b>    |
| Forest Road           | Public Phone           | Public Hunting Tracts       |
| Milburn Landing Trail |                        | Not Open for Public Hunting |
| Other Trail           |                        |                             |
| Road                  |                        |                             |



State Forest Office: 1-410-632-3732  
 Forest Watch: 1-800-825-7275  
 Natural Resources Police  
 (Emergencies): 1-410-260-8888

**POCOMOKE SF HICKORY POINT**

