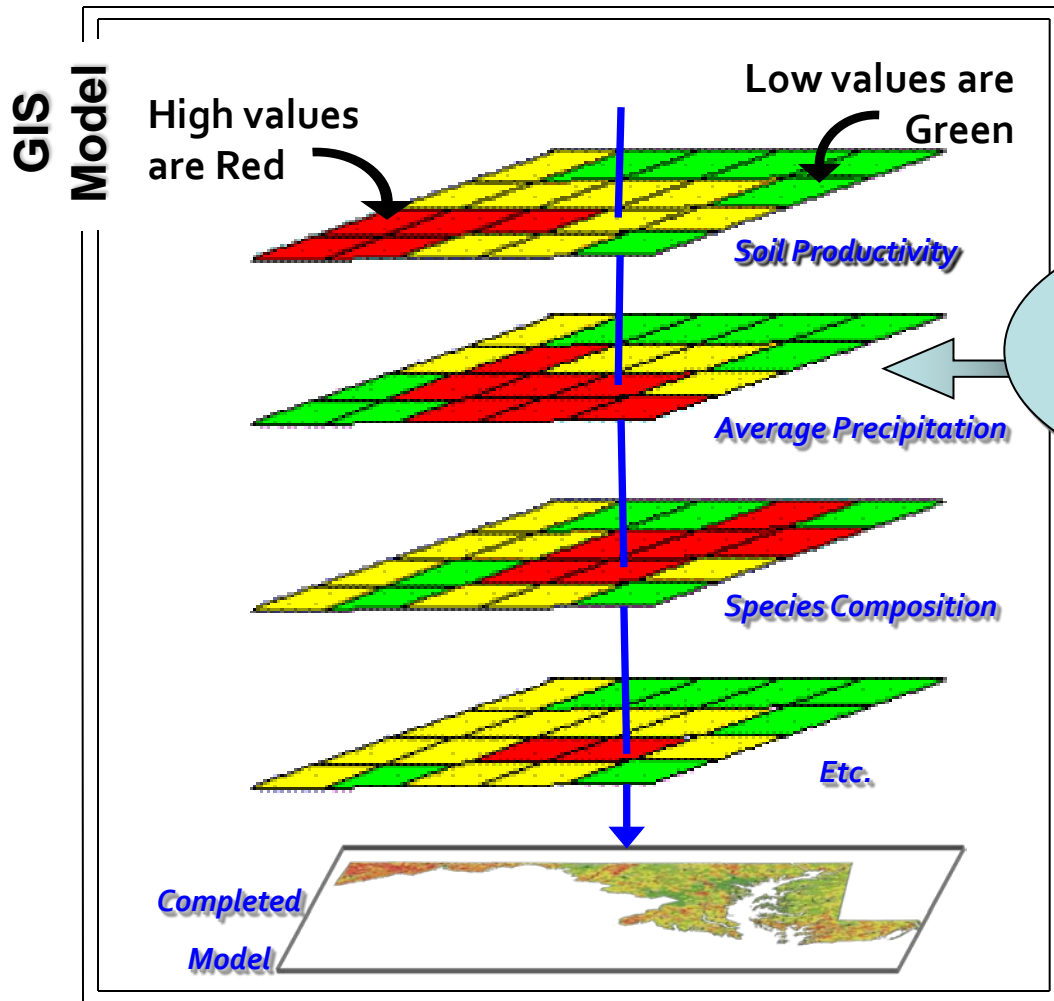
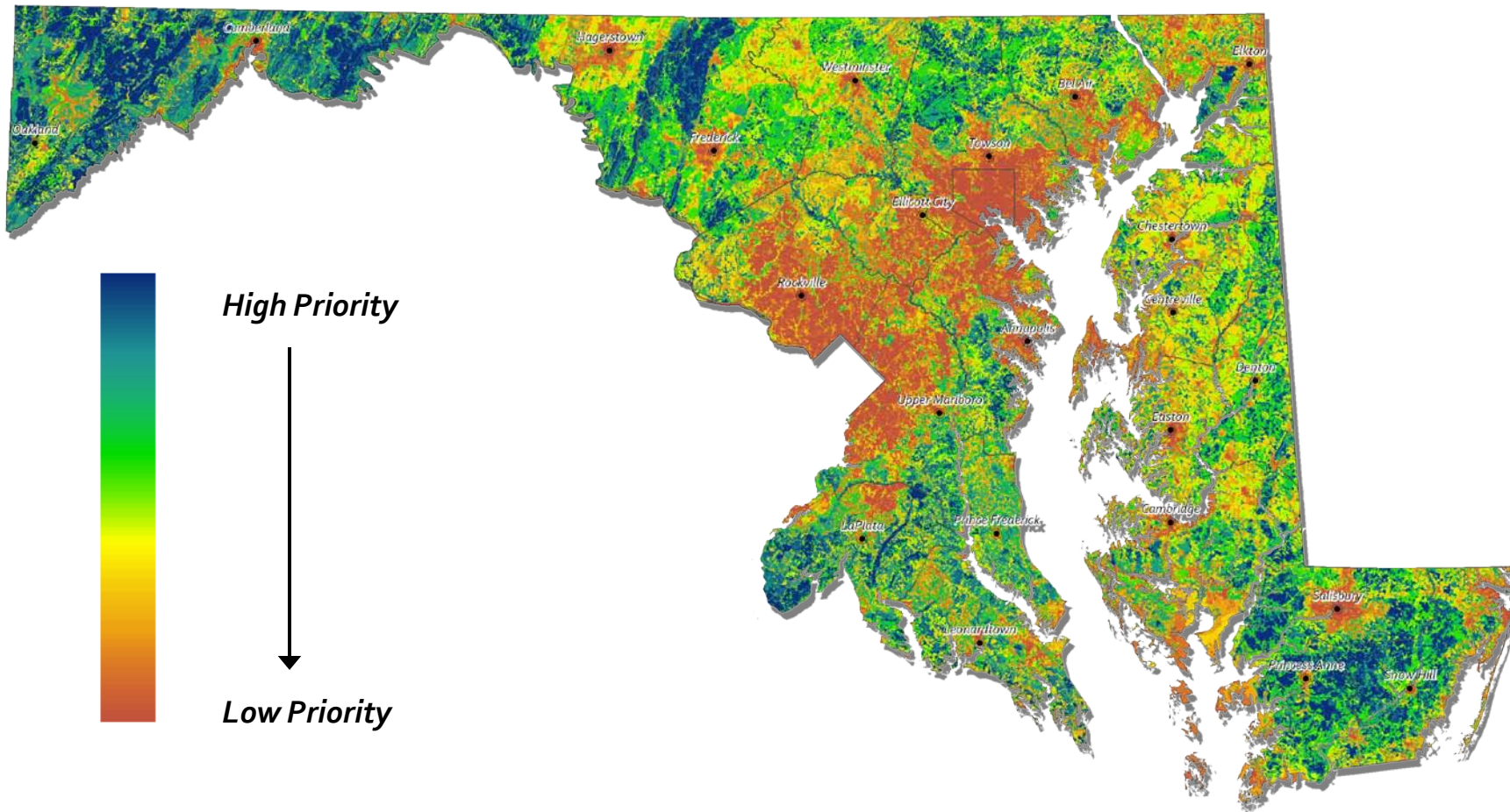


Economic Potential

	Data Layer Name	Layer Weight (0-10)	Model Influence (%)
Model Components	<i>Species Composition (GAP)</i>	10	13.5%
	<i>Public Land Management Activities</i>	10	13.5%
	<i>Soil Productivity (Site Index)</i>	8	10.8%
	<i>Steep Slopes (>50%)</i>	7	9.5%
	<i>Probability of Commercial Timber Management</i>	7	9.5%
	<i>Forestry Friendly Zoning</i>	7	9.5%
	<i>Wetland Features</i>	5	6.8%
	<i>Forest Patch Size</i>	5	6.8%
	<i>Fragmentation Probability</i>	5	6.8%
	<i>Rare, Threatened, and Endangered Species</i>	4	5.4%
	<i>Distance to Processing</i>	4	5.4%
	<i>Precipitation (1971 to 2001 Average)</i>	2	2.7%



Economic Potential Model Results



Economic Potential Priority Areas

