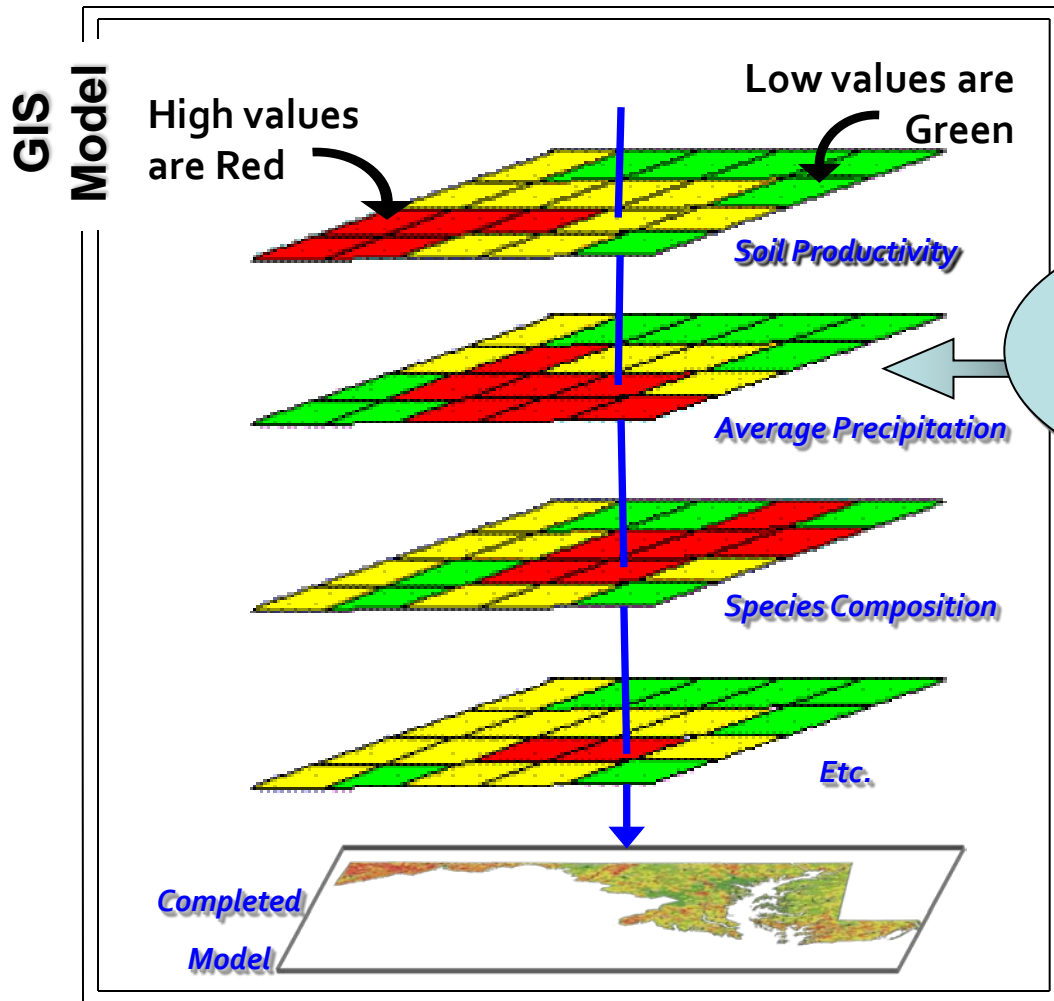


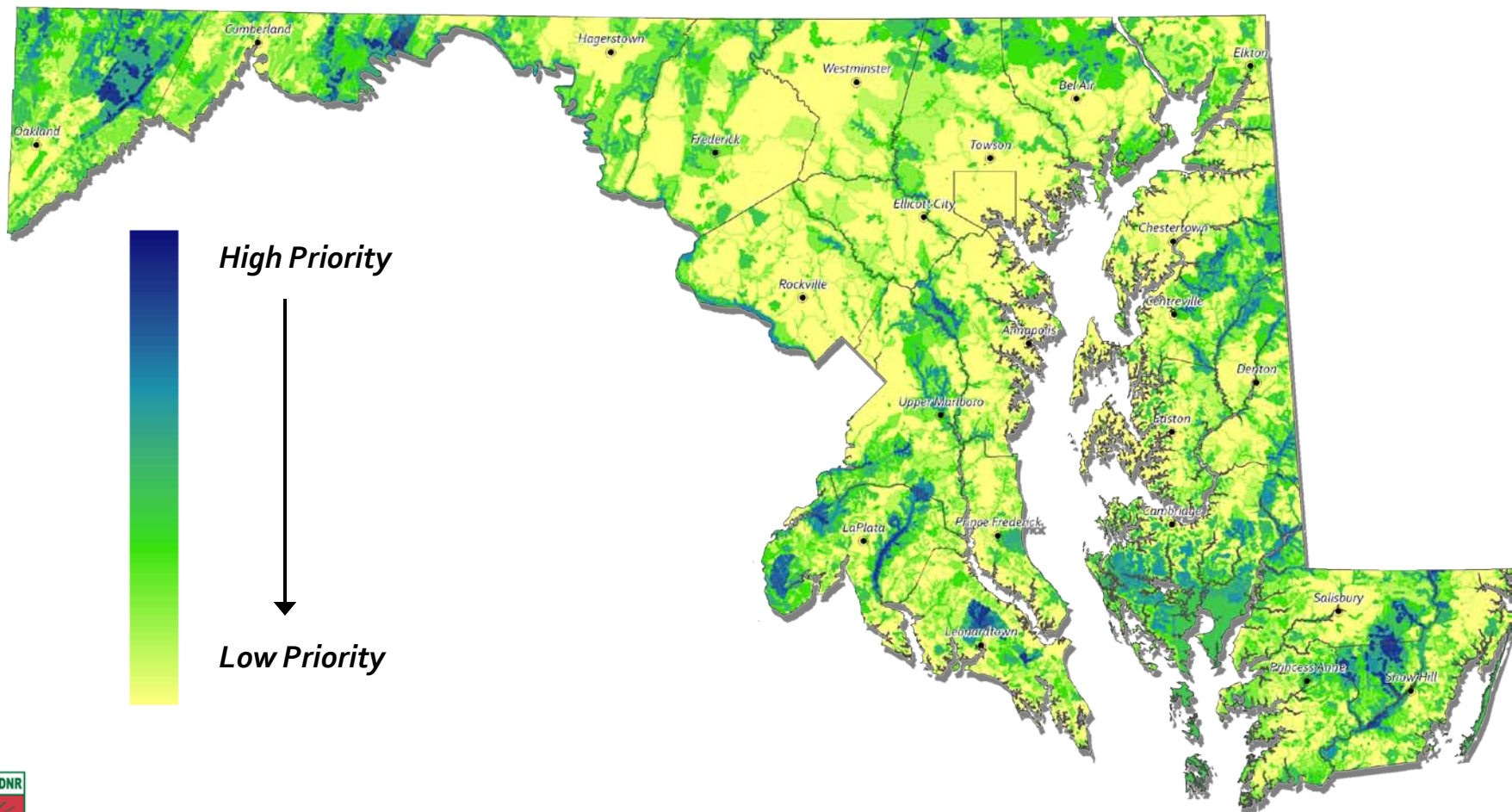
Fish and Wildlife

<i>Data Layer Name</i>		<i>Layer Weight (0-15)</i>	<i>Model Influence (%)</i>
<i>Model Components</i>	<i>Sensitive Species Project Review Areas</i>	15	21%
	<i>Old Growth Forest</i>	15	21%
	<i>Stronghold Watersheds</i>	11	15%
	<i>Green Infrastructure</i>	8	11%
	<i>Potential FIDS Habitats</i>	6	8%
	<i>MDE High Quality Waters</i>	6	8%
	<i>TNC Forest Matrix Blocks</i>	4	5%
	<i>Wetlands</i>	4	5%
	<i>Special Streams</i>	4	5%



Each data layer represents a theme or element that influences the model outcome.

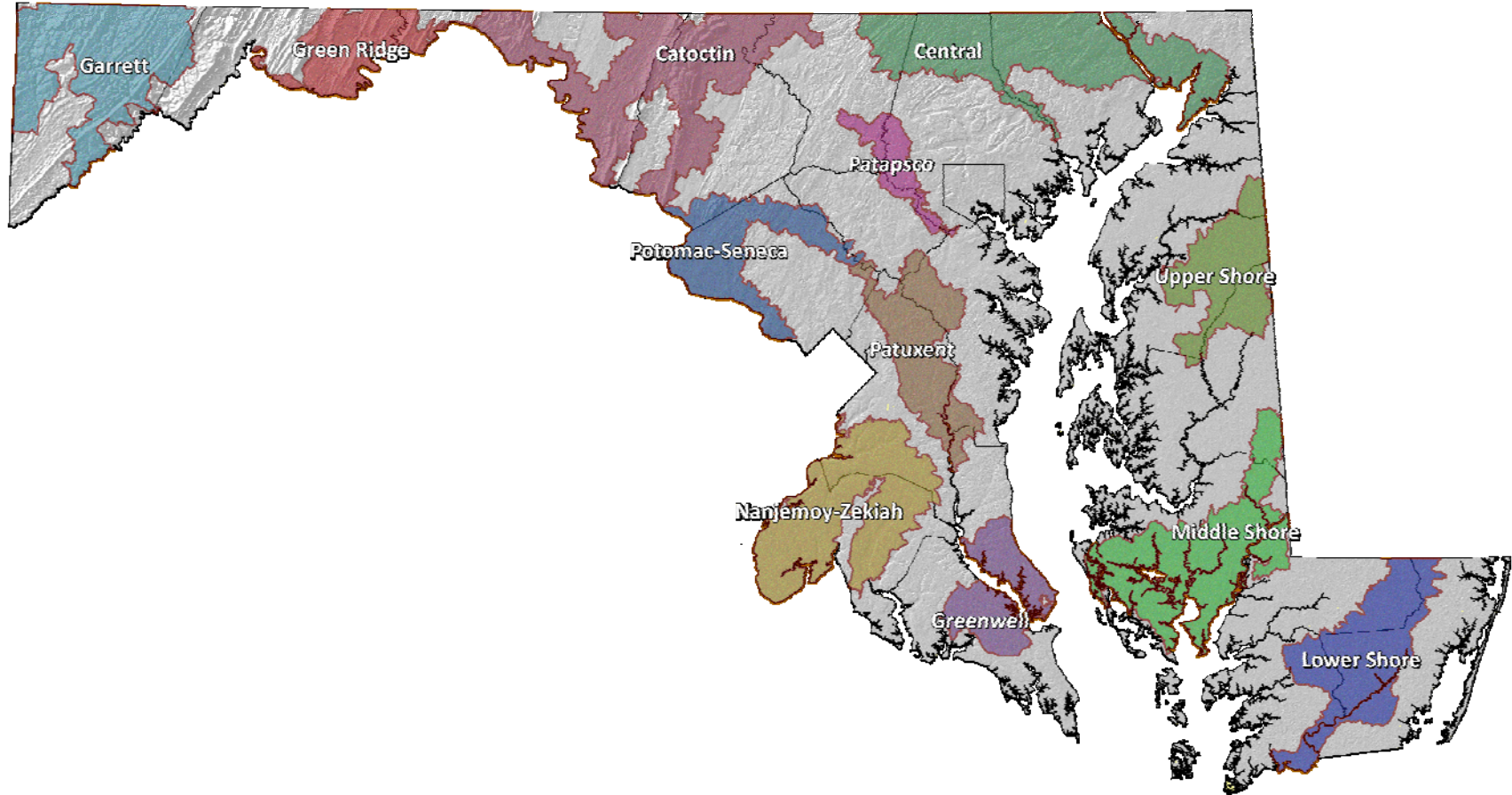
Fish and Wildlife Model Results





MARYLAND DEPARTMENT OF NATURAL RESOURCES Forest Service

Fish and Wildlife Priority Areas



Conserving Maryland's Working Forests

