

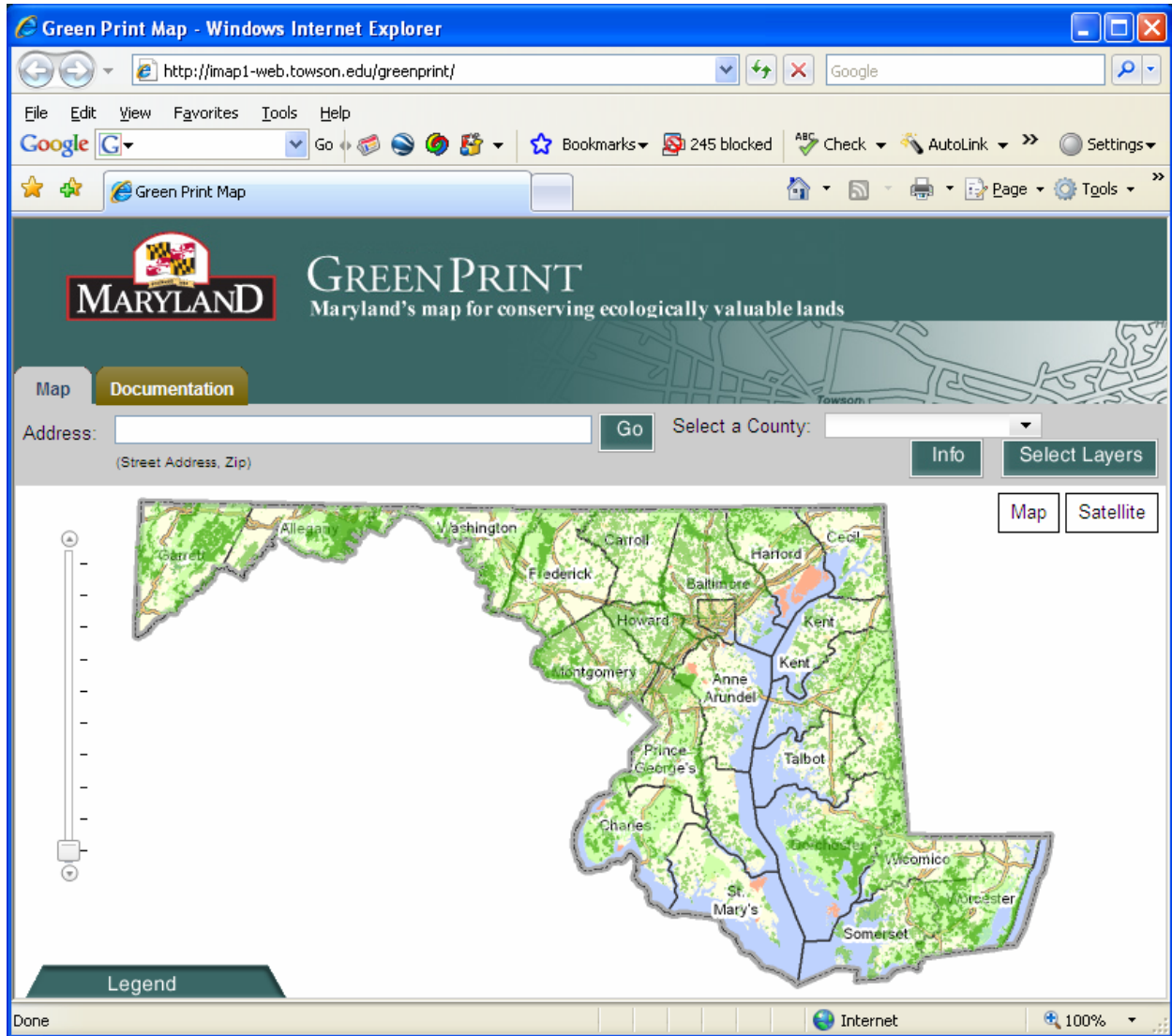
GreenPrint Interactive Map Users Guide

The Office of Governor Martin O'Malley, the Maryland Departments of Agriculture, Natural Resources and Planning, Towson University's Center for Geographic Information Sciences and the Environmental Systems Research Institute partnered to develop this GreenPrint interactive map.

Specialized software is not required to use this map. Only a web browser is needed. The map has been tested using two different web browsers – Internet Explorer 7 and Firefox Version 2.0.0.16 or better. If you are using older version of these browsers or are using a different browser the map may not function as designed.

Launch the Interactive Map

Upon clicking the mouse on the Launch the Interactive Map button the map will load in several seconds.



The map of Maryland shows two green colors – light green and dark green. The dark green represents the land already protected from development. The light green represents land targeted for protection due to its high ecological value. The tan represents military installations.



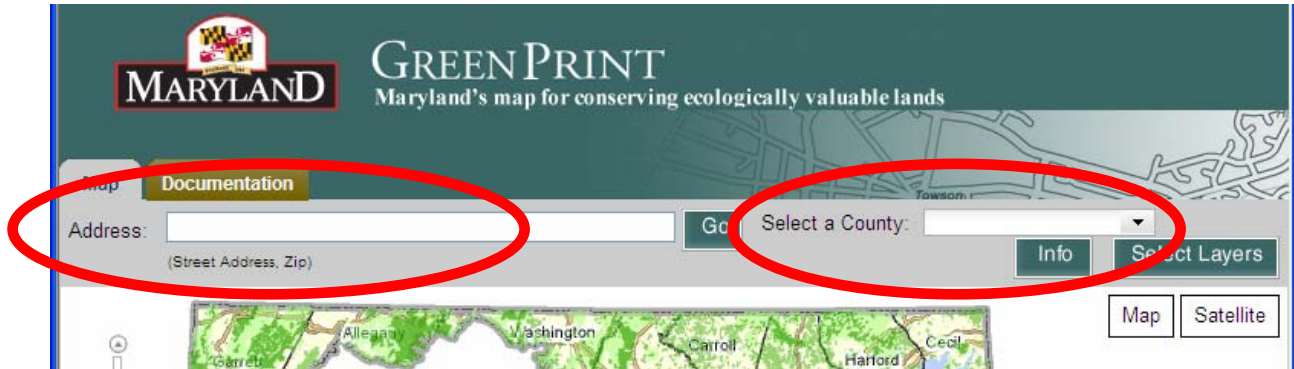
Clicking on the Legend tab in the lower left hand corner of the map will display Map Legend that briefly describes what can be found on the map depending on the data displayed. Click on the Legend tab to close the Legend.

Navigating Around the Map

Enter a street address in the Address Box at the top left hand corner of the map. 100 Main Street, 21403. Click on the Go button.

Select a county from Select a County pick list on the top right hand corner of the map.

Click and hold the left mouse on the map to move the map around in the window.



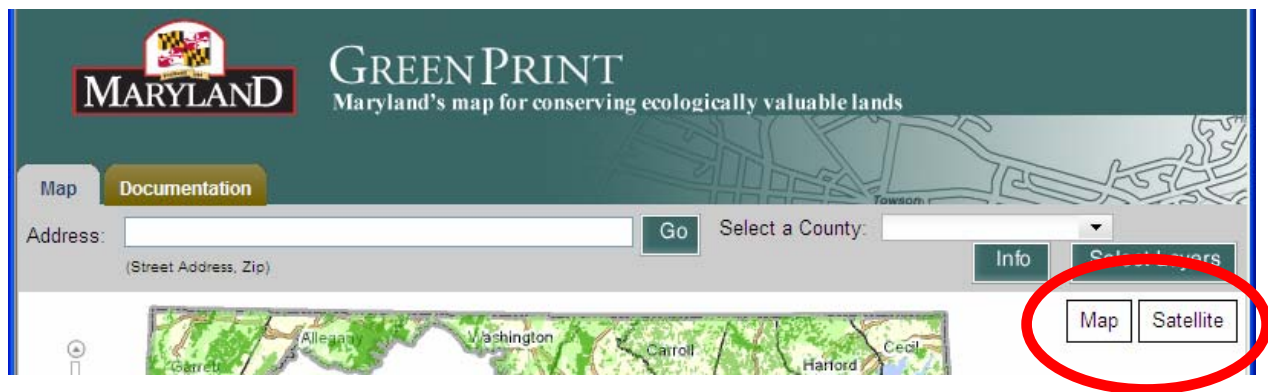
Zooming In or Out of the Map to See More or Less Detail

Use the slide bar on the left to zoom in or out. With the mouse, drag the button on the slide bar up or down, click on the slide bar above or below the button, or click on the small arrows at the slide bar ends.

If when zooming in the map turns to all white space, zoom out a little to see the map, move the map so that the area of interest is in the middle of the window and resume zooming.

Changing the Look of the Map

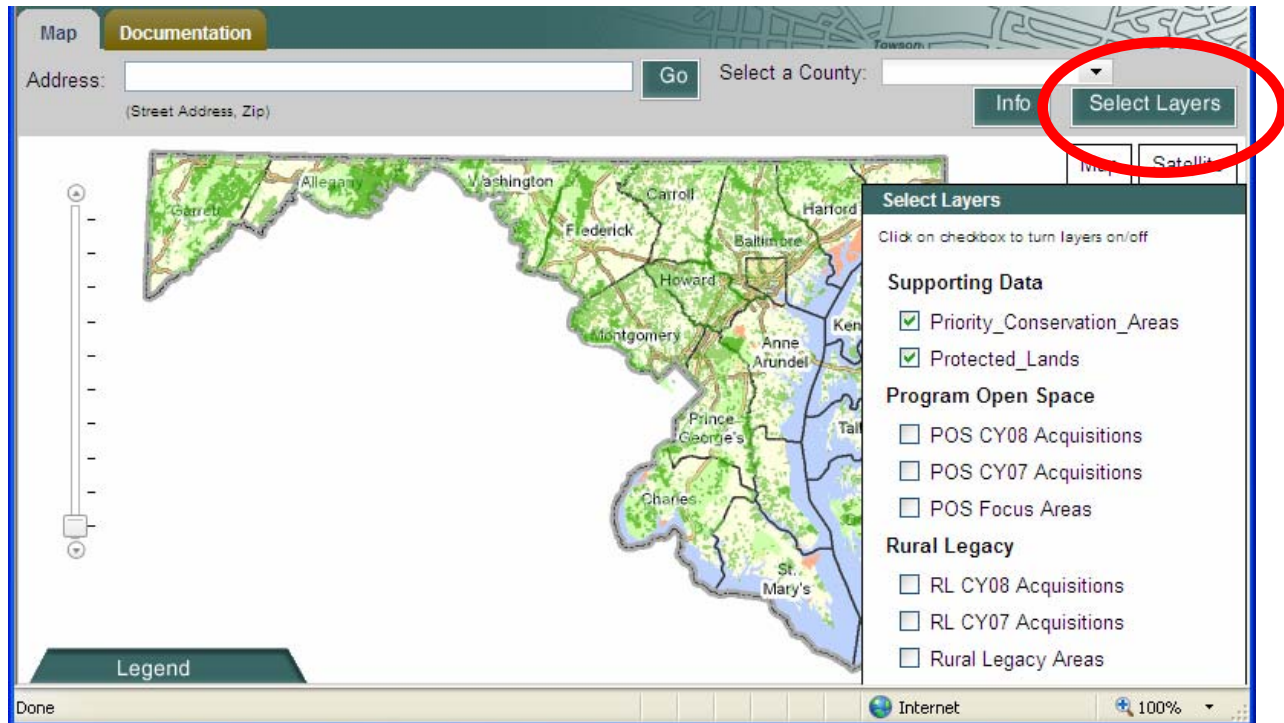
There are two different map views. One is a traditional map with roads, place names, city and town boundaries, etc. The other is an image. See the buttons called Map and Satellite in the upper right hand corner of the map.



Clicking on the Satellite button will change the map to imagery captured in the summer of 2007. Clicking on the Map button will return the map back to the traditional map.

Changing Data on the Map

The GreenPrint interactive map starts with the traditional map as the base and has the light green/dark green colors displayed. The user can control what data is displayed on the map. Click on the Select Layers button on the top right hand corner of the map and a list of data will be displayed.



Green Check marks indicate the data that is “turned on” to display ion the map. Clicking in a check box will turn a data layer on or off. The map will redraw automatically.

A layer that is grayed out is available to the map but is not visible at the current zoom level of the map. For example, At eh statewide view, the layer named Parcels is grayed out and the check box does nothing. The parcel, property or tax map data is not displayed or “turned on” at the current zoom level. Zooming into map to a high degree will display the parcels. The Parcels layer is no longer grayed out.

Supporting Data

- Priority Conservation Areas – this layer represents the Priority Conservation Areas – those lands the State wants to protect due to it high ecological value.
- Protected Lands – this layer represents those lands already protected from development.
- Parcels – this layer represents the parcel, property or tax maps data. It displays only at a high zoom level. The data consists of two parts – a map of the property boundary, and an Orange box in the middle of the parcel. Clicking on this box will open a window that displays information about the parcel.

Program Open Space

- POS CY08 Acquisitions - this layer represents lands that were purchased by Program Open Space (POS) in calendar year 2008 (CY08).

- POS CY07 Acquisitions - this layer represents lands that were purchased by Program Open Space (POS) in calendar year 2007 (CY07).
- POS Focus Areas - this layer represents the areas that the Program Open Space has identified, focusing program efforts to protect land. Properties outside these areas may be protected but it serves to guide program efforts.

Rural Legacy

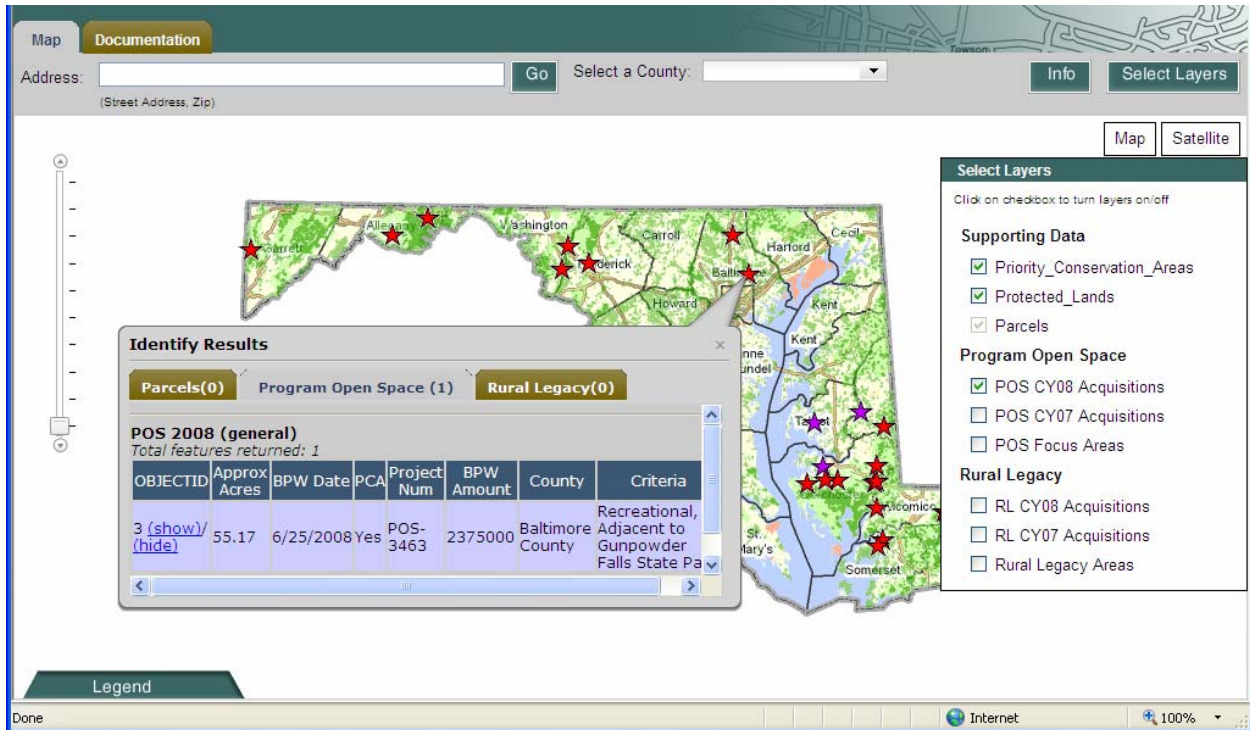
- RL CY08 Acquisitions - this layer represents lands that were purchased by the Rural Legacy program (RL) in calendar year 2008 (RL08).
- RL CY07 Acquisitions - this layer represents lands that were purchased by the Rural Legacy program (RL) in calendar year 2007 (RL07).
- Rural Legacy Areas - this layer represents the areas identified by the Rural Legacy program as suitable for protection.

When the POS CY08/07 Acquisitions or the RL CY08/07 Acquisitions data layers are displayed, the symbols displayed on the map will be a “Star” symbol or the shape of the property purchased. The Star displays as low zoom levels and the property shape is displayed at high zoom levels. The system handles this automatically.

Examining Details of Data

The Info button – next to the Select Layers button directs the user to click the left mouse on a feature. A window will open up and indicate if there is information in the map to examine. For example, turn on a data layer for the POS CY08. Click on the Star or property depending on the zoom level. Then click on the appropriate tab on the window – Program Open Space in this case.

The data table for Program Open Space (POS) purchases is described below.



POS CYxx Acquisitions – Stateside Program Open Space acquisitions in calendar year xx, where xx represents a two-digit year

Established in 1969, Program Open Space (POS) symbolizes Maryland’s long-term commitment to conserving natural resources while providing exceptional outdoor recreation opportunities. POS Stateside acquires parklands, forests, wildlife habitat, and natural, scenic and cultural resources for public use.

The star symbol, which displays at regional and statewide views, shows the location of a project purchased in a calendar year. A project can consist of one or more parcels. Actual parcels purchased within a calendar year display at a more detailed, neighborhood view.

Information Tips

- Approx Acre – Approximate number of fee-simple or easement acres purchased
- BPW Date – Date the POS project was approved by the Board of Public Works
- BPW Amount – Dollar amount approved by the Board of Public Works for a POS project
- County – The name of the county in which a POS parcel is located.
- Criteria – POS’s rationale for purchasing the project
- PCA – Specifies whether POS project falls within the Priority Conservation Area

Yes = In PCA
 No = Out of PCA

Project Num – Reference number assigned to POS project

The data table for Rural Legacy (RL) purchases is described below.

The screenshot shows a GIS web application interface. At the top, there is a search bar with the text "Address: (Street Address, Zip)" and a "Go" button. To the right is a "Select a County:" dropdown menu, an "Info" button, and a "Select Layers" button. Below the search bar is a vertical scale bar. The main map area displays a map of West Virginia with several star symbols indicating project locations. A pop-up window titled "Identify Results" is overlaid on the map, showing a table of results for "Rural Legacy (1)". The table has columns for OBJECTID, RL_Area, BPW_Date, PCA, Amount, County, Acres, and Shape. The first row shows a project with OBJECTID 16, RL_Area Lower Deer Creek, BPW_Date 8/20/2008, PCA Yes, Amount 317301.5, County Harford, Acres 26.81, and Shape Point. To the right of the map is a "Select Layers" panel with checkboxes for "Supporting Data" (Priority_Conservation_Areas, Protected_Lands, Parcels), "Program Open Space" (POS CY08 Acquisitions, POS CY07 Acquisitions, POS Focus Areas), and "Rural Legacy" (RL CY08 Acquisitions, RL CY07 Acquisitions, Rural Legacy Areas). At the bottom left is a "Legend" button, and at the bottom right is a status bar showing "Internet" and "100%".

OBJECTID	RL_Area	BPW_Date	PCA	Amount	County	Acres	Shape
16 (show/ hide)	Lower Deer Creek	8/20/2008	Yes	317301.5	Harford	26.81	Point

RL CYxx Acquisitions – Rural Legacy acquisitions in calendar year xx, where xx represents two-digit year

The Rural Legacy Program provides the focus and funding necessary to protect large, contiguous tracts of land and other strategic areas from sprawl development and to enhance natural resource, agricultural, forestry and environmental protection through cooperative efforts among state and local governments and land trusts. Protection is provided through the acquisition of easements and fee estates from willing landowners and the supporting activities of Rural Legacy Sponsors and local governments.

The star symbol, which displays at regional and statewide views, shows the location of a project purchased in a calendar year. A project can consist of one or more parcels. Actual parcels purchased within a calendar year display at a more detailed, neighborhood views.

Information Tips

Acres – Approximate number of fee-simple or easement acres purchased

BPW_Date – Date the Rural Legacy project was approved by the Board of Public

Works

County –The name of the county in which a Rural Legacy project is located.

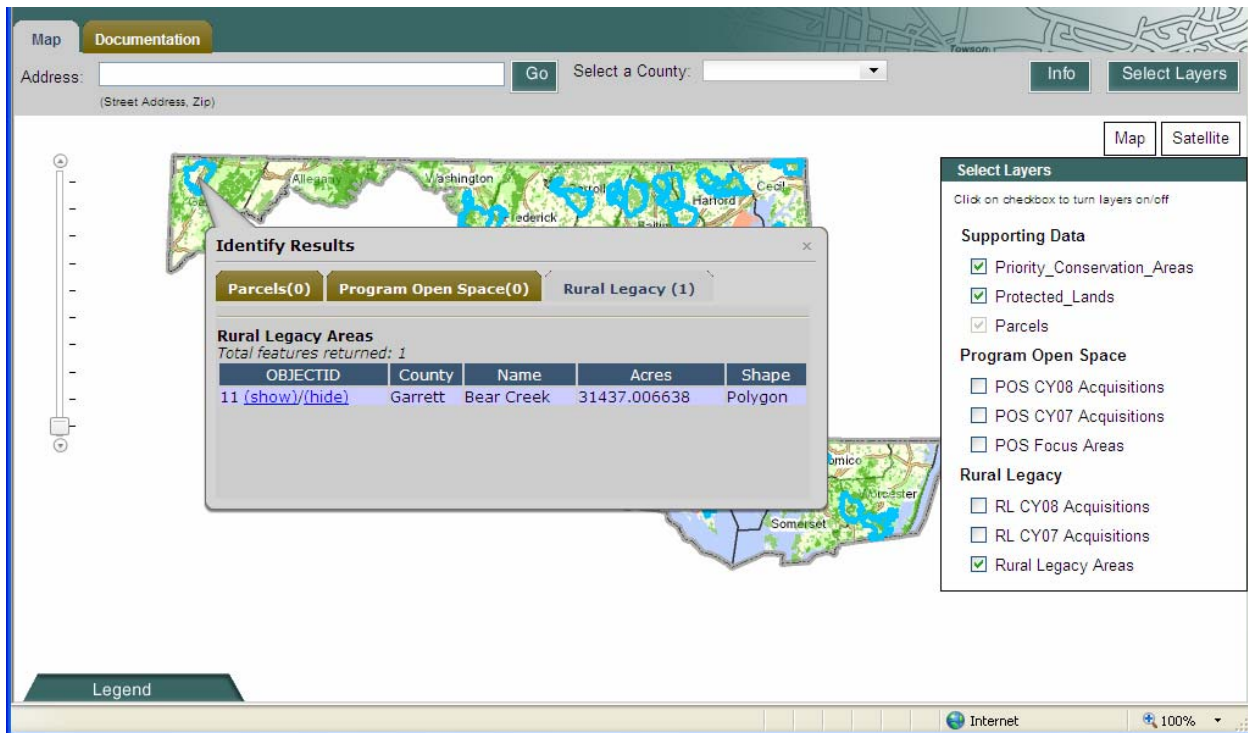
PCA – Specifies whether Rural Legacy project falls within the Priority

Conservation Area

Yes = In PCA
No = Out of PCA

Project BPW Amount – Dollar amount approved by the Board of Public Works
RL_Area – Name of Rural Legacy Area

The data table for Rural Legacy Areas is described below.



The Rural Legacy Program was created in 1997 to protect large, contiguous tracts of Maryland's most precious cultural and natural resource lands through grants made to local applicants. In a grass root approach, local government and land trusts (sponsors) apply to have places that are significant to the community and the state designated as Rural Legacy Areas. Rural Legacy applications are reviewed by the Rural Legacy Advisory Committee, a panel of eleven volunteers appointed by the Governor. Their recommendations are then forwarded to the Rural Legacy Board which is comprised of the Secretaries of the Departments of Natural Resources, Agriculture, and Planning. Their recommendations are, in turn, reviewed and approved by the Maryland Board of Public Works, comprised of the Governor, the Comptroller and the Treasurer.

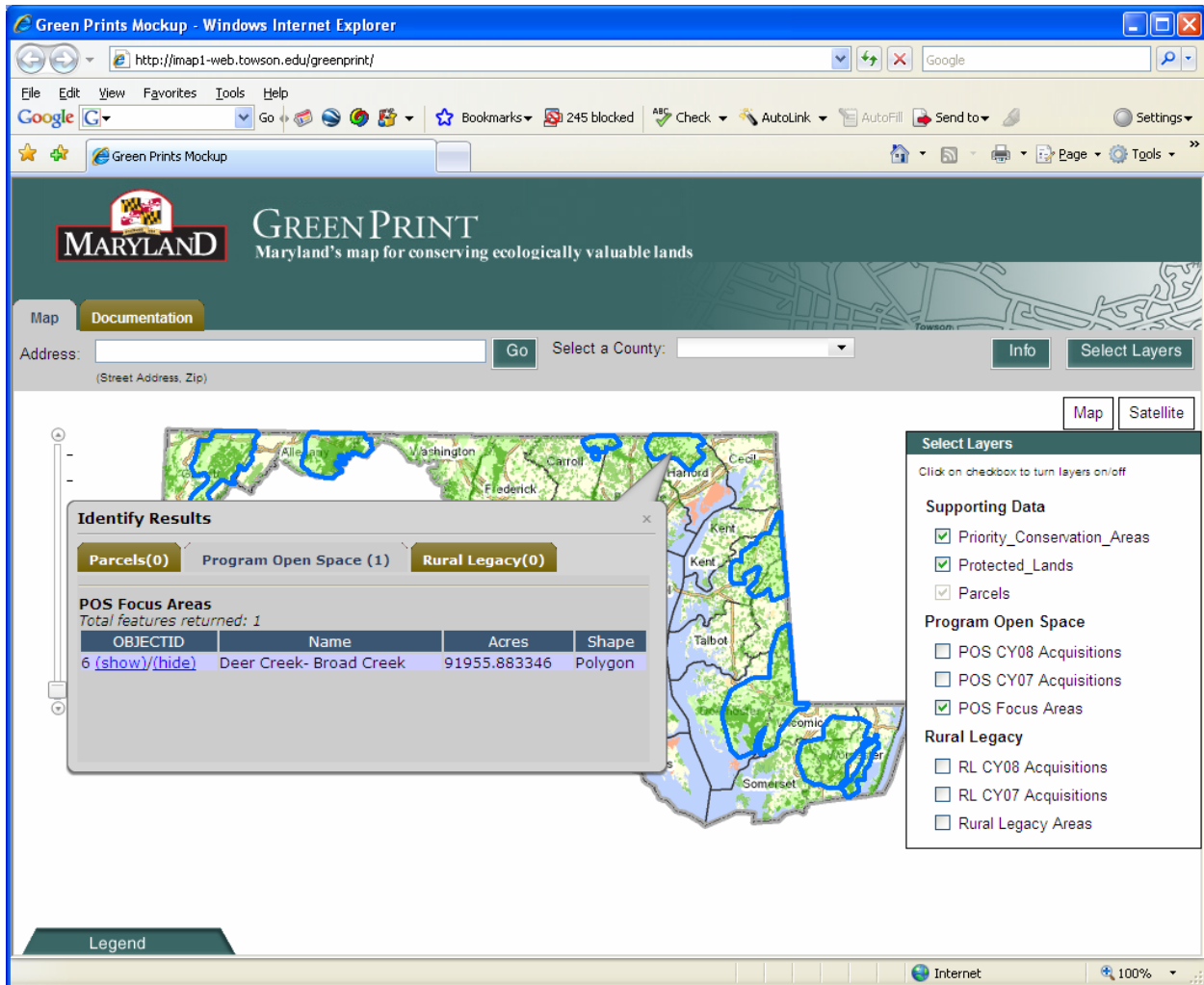
Information Tips for Rural Legacy Areas

Acres – This field is the amount of acreage within a Rural Legacy Area as calculated by ArcMap.

County – The name of the county or counties in which the Rural Legacy Area is located.

Rural Legacy Area – Name of the designated Rural Legacy Area

The data table for Focus Areas is described below.

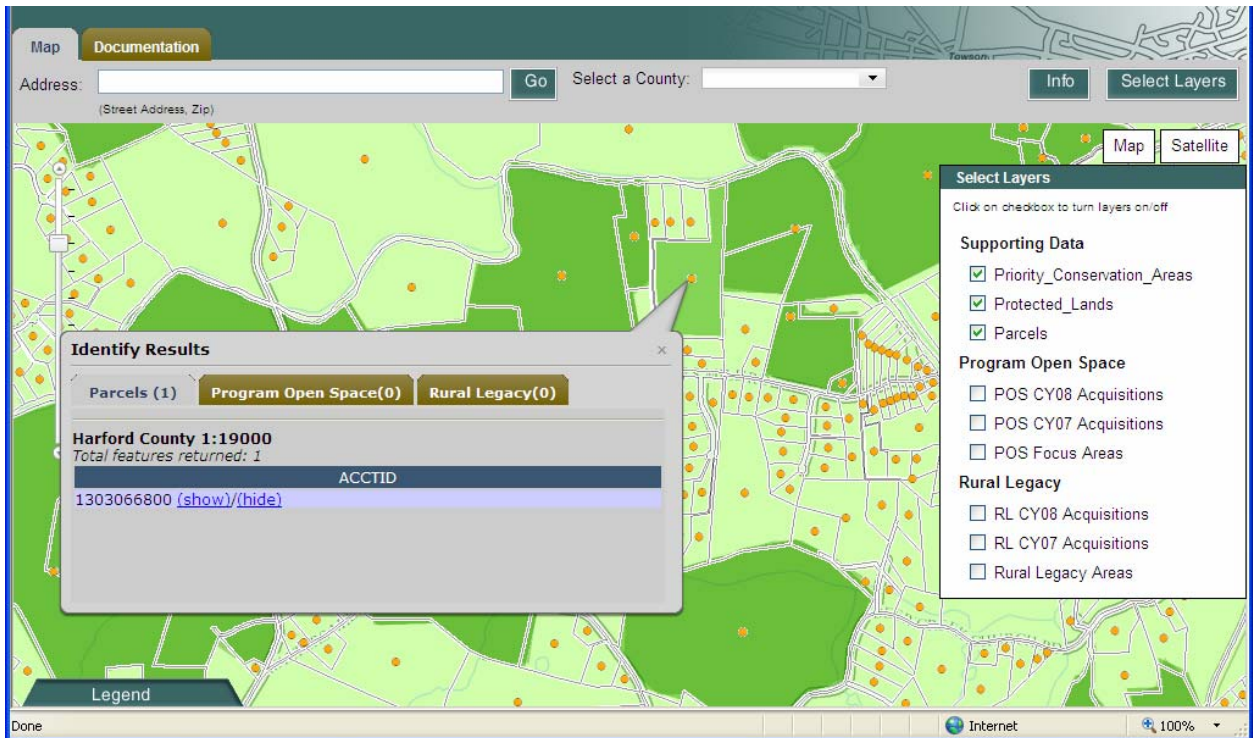


The Department of Natural Resources (DNR) has implemented a “POS Targeting” land conservation system based first on ecological priorities. The “POS Targeting System” begins with an ecological screen that uses an ecological baseline to select Priority Conservation Areas (PCA). From the collection of selected areas, a programmatic screen uses implementation criteria to identify annual Focus Areas. Finally, a parcel screen is used to assess, score, and prioritize parcels within the focus areas. A smaller portion of State POS funds will still be used to acquire high priority recreational, cultural, and historic sites, provide key Chesapeake Bay access points, connect trails, and acquire state park in-holdings.

Information Tips for Focus Areas

ACRES – Focus Area GIS acres generated in ArcMap
 NAME – Name of Focus Area

The data table for Parcels is described below.



ACCTID is the account identifier for the parcel. It is a unique number for every parcel in the State. Each point or node displayed represents a link to the Maryland Department of Assessments and Taxation's (SDAT) parcel database - http://sdatcert3.resiusa.org/rp_rewrite/. The Property Account Identifier provided by the system is described below.

Parcel account number, a unique identifier for each account within any county.

Anne Arundel

Positions 1-2 are the jurisdiction (county) code, positions 3-4 are the tax district, positions 5-7 are the subdivision and the remaining 9 positions are the parcel account number.

Baltimore City

Positions 1-2 are the jurisdiction (city) code, positions 3-4 are the ward, positions 5-6 are the section, positions 7-11 are the block, positions 13-15 are the lot and position 16 is filler.

All Other Counties

Positions 1-2 are the jurisdiction (county) code, positions 3-4 are the tax/election district and the remaining 12 positions are the parcel account number.