

Savage River State Forest

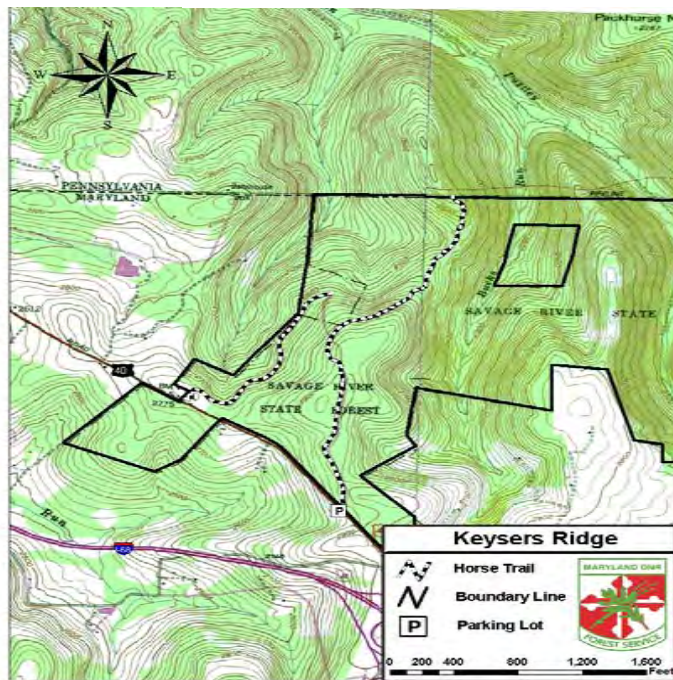
HORSEBACK RIDING



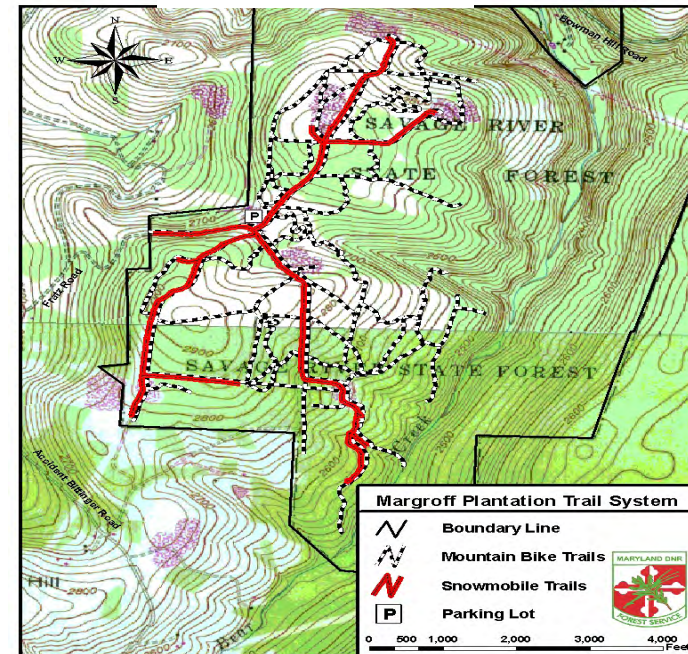
The facilities and services of the Maryland Department of Natural Resources are available to all without regard to race, color, religion, sex, sexual orientation, age, national origin, physical or mental disability. This document is available in alternative format upon request from a qualified individual with a disability.

Martin O'Malley, Governor
 Anthony G. Brown, Lt. Governor
 John R. Griffin, Secretary
 Steven W. Koehn, Director, Forest Service
 TTY via Maryland Relay: 711 (Within MD)
 (800) 735-2258 (Out of State)
 Toll Free #: 1-877-620-8DNR ext 8531
<http://www.dnr.maryland.gov>

Keversers Ridge



Margraff Plantation



Horseback riding is permitted anywhere on Savage River State Forest except within park boundaries and on designated foot trails (Big Savage Hiking Trail and Monroe Run Hiking Trail). Recommended areas include Margroff Plantation, Keyser's Ridge, Negro Mountain Snowmobile Trail, the Meadow Mountain Trail and the Asa Durst Homestead Area.

Horses may be used in conjunction with camping, hunting, and other forms of approved forest recreation.

Visitors camping with horses should plan on using the campsites located at the Margroff Plantation and must be responsible for clean up after camping at these designated sites.

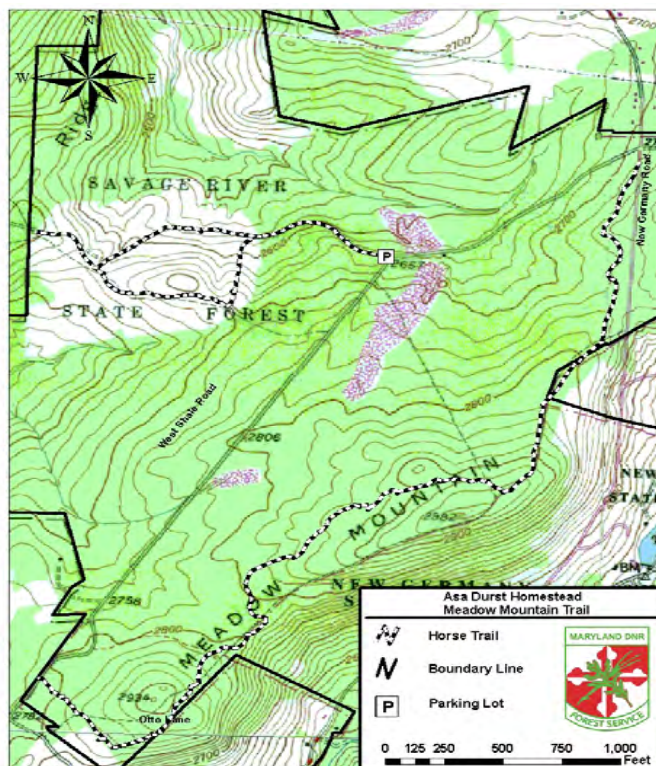
Large groups with more than twenty animals must have prior approval to assure minimal environmental impacts. Please refer to our general camping regulations.

Large groups with more than twenty animals must have prior approval to assure minimal environmental impacts. Please refer to our general camping regulations.

Please visit or contact our office at:

Savage River State Forest
127 Headquarters Lane
Grantsville, MD 21536
301-895-5759

Asa Durst Homestead/Meadow Mt Trail



Negro Mountain

