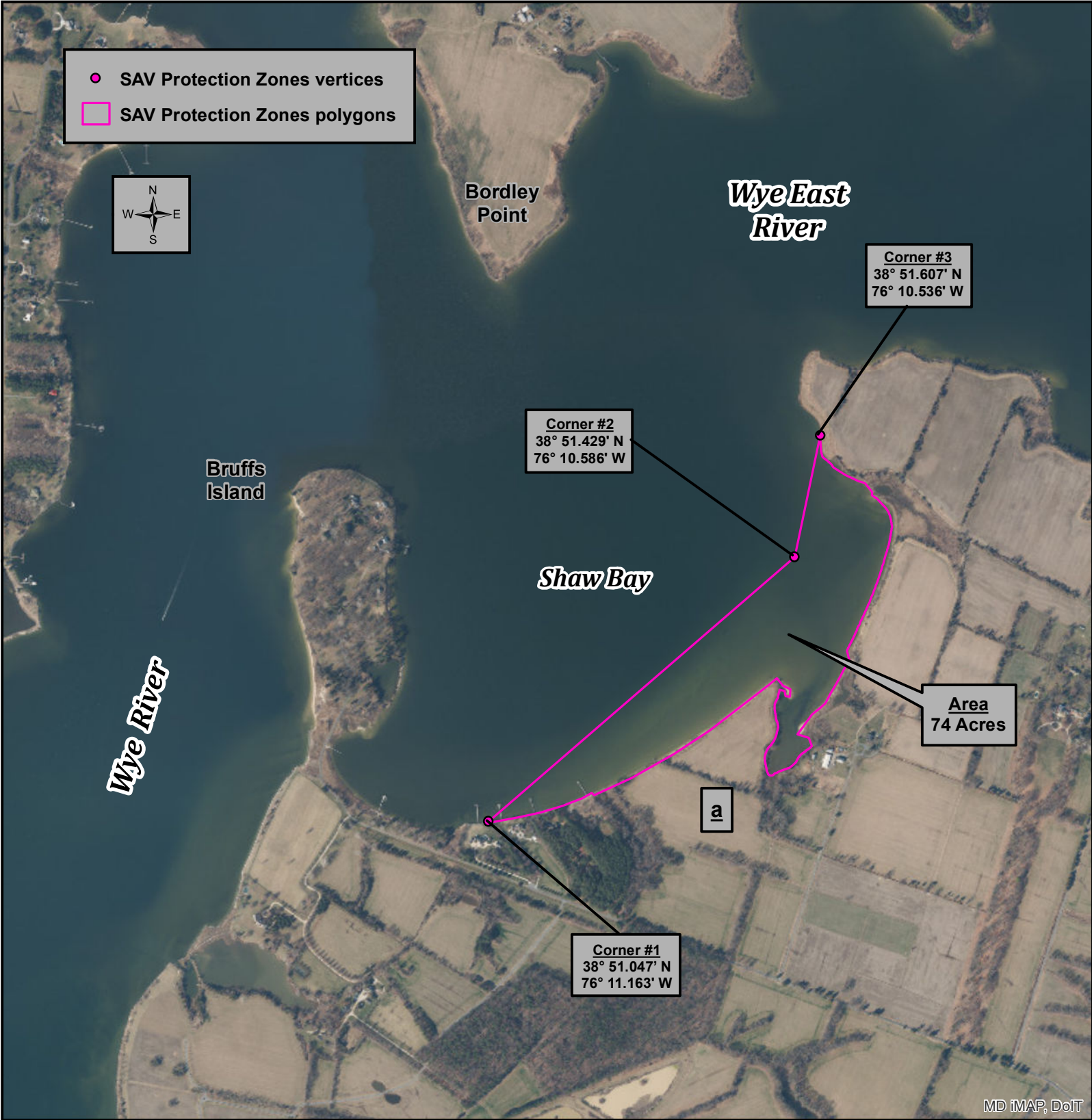


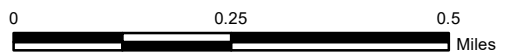
SAV Protection Zones - COMAR 08.02.01.12(3)(a)

Talbot County - Shaw Bay



Wes Moore Governor
Aruna Miller Lt. Governor
Josh Kurtz Secretary
David Goshorn Deputy Secretary

effective December 11th, 2023



Projection:
Lambert Conformal Conic
North American Datum 1983

FOR INTERACTIVE MAP APPLICATION PLEASE SEE --
DNR.MARYLAND.GOV/FISHERIES/PAGES/ISHELLFISH/MAIN.ASPX