

**Summer 2015
MARI Volunteer Survey
Web/Phone Training**

Linda Barker

*6 – 7 pm
May 21, 2015*

Why Monitor Artificial Reefs?

- To meet requirements of the Artificial Reef Plan.
- To evaluate the performance of artificial reef projects.
- To collect data to support permit renewal and funding requests.

We are Learning About...

- Fishing Success
- Species Diversity
- Fish Lengths
- Angler Attitudes
- Volunteer Data Validity
- Survey Costs

General Survey Outline

- Logbooks (& hats) have been mailed – let us know if you have not gotten yours by next week.
- Go Fishing! on your assigned site from May 30 - Aug 30.
- Record information on ALL trips.
- You may scan and email pages to Erik Zlokovitz during the summer.
- ALL log sheets must be returned at the end of the survey (SASE will be mailed to you).
- DNR will analyze the information and provide reports to participating anglers and the Artificial Reef Committee.

First Things First

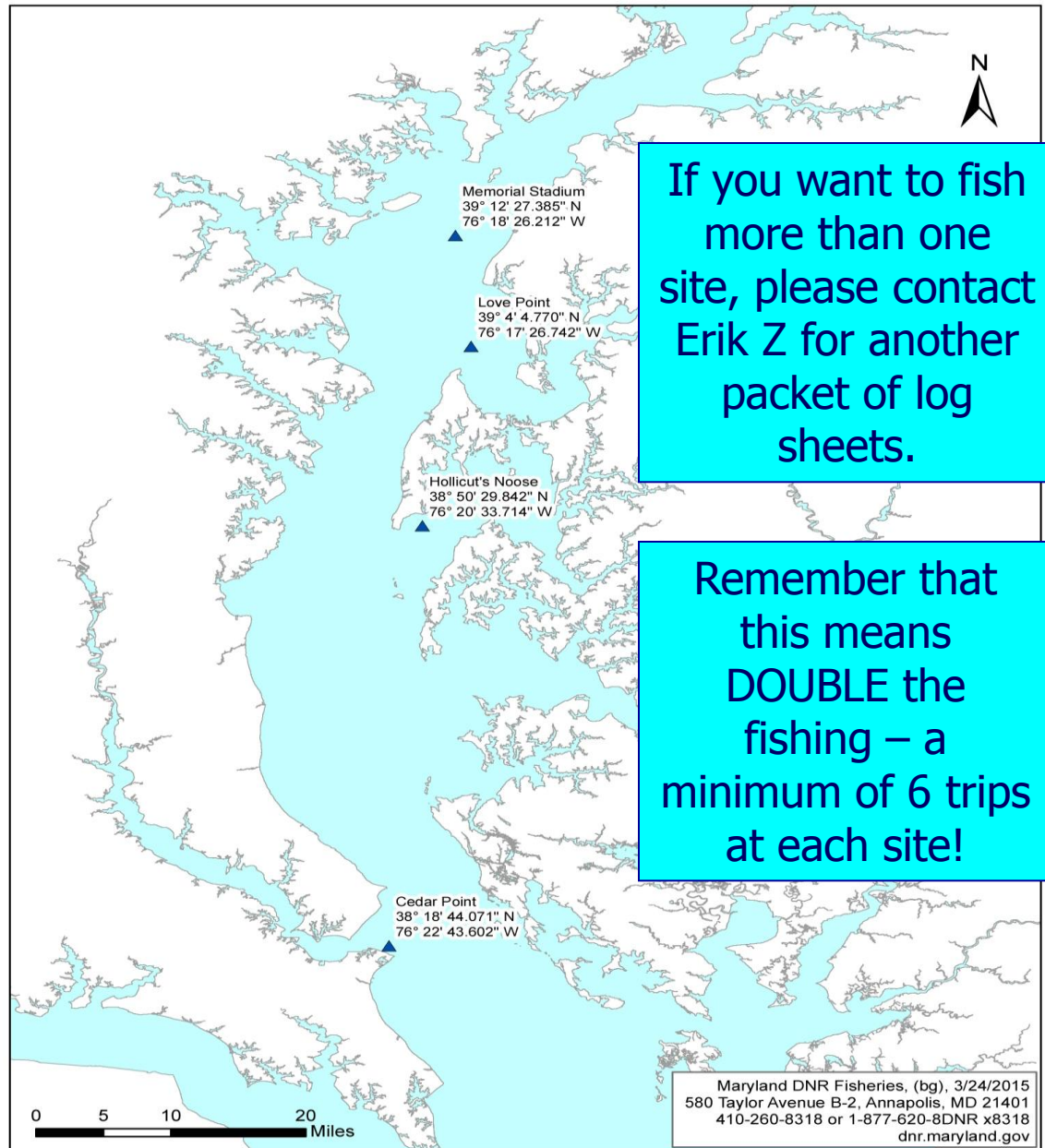
- DNR Fishing License!
- A boat = ability to fish on MARI sites
- GPS – ability to fish on designated location
- Ability to take at least 6 fishing trips (2 per month) between June – August.

OK, Let's Fish!

- Start fishing Saturday May 30
- Make at least 6 trips, 2 per month, and more if you like.
- Fish at least 1 hour
- Last trip date = Aug 30

Bay Study Sites

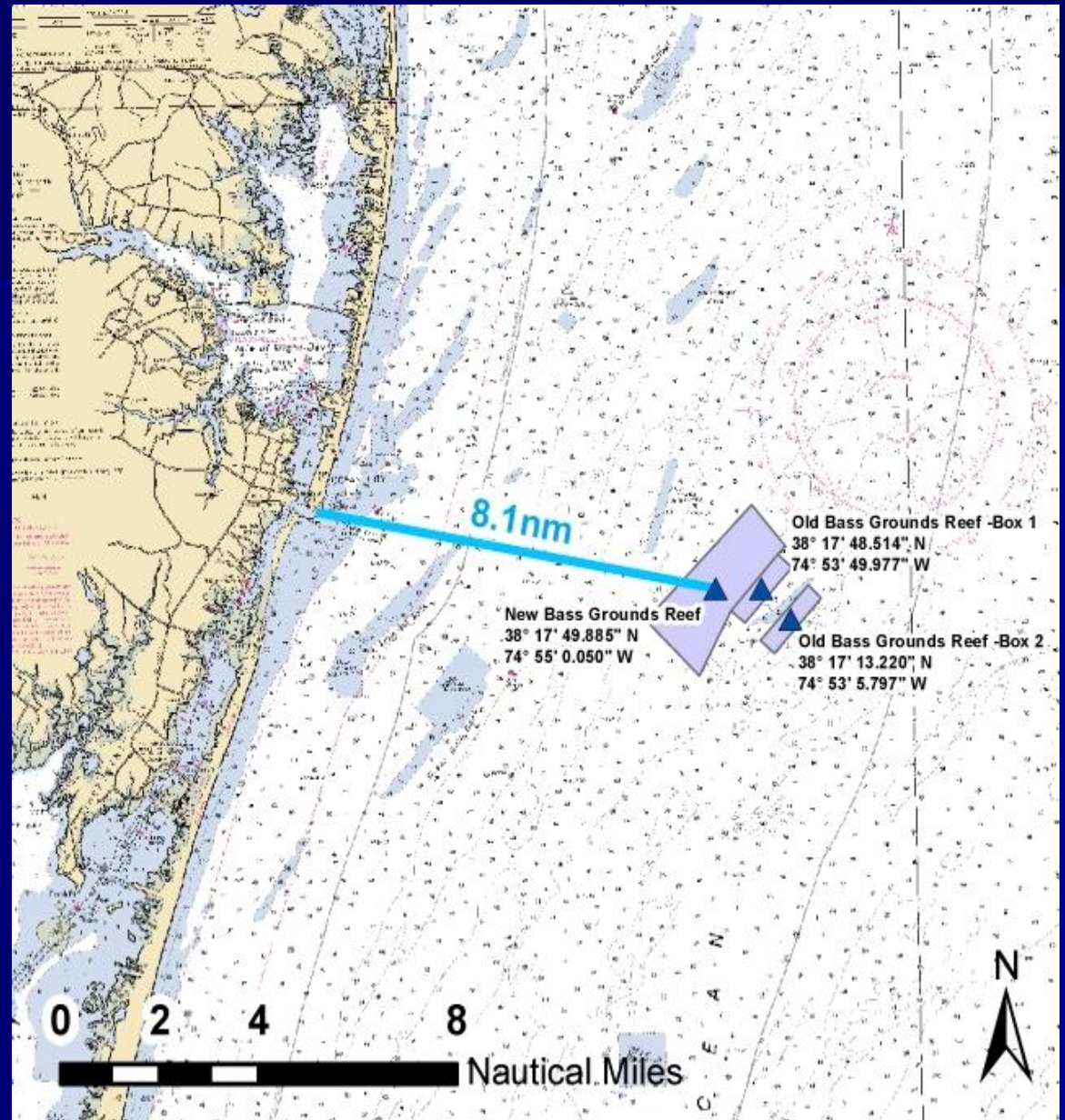
MARI Survey Sample Sites



If you want to fish more than one site, please contact Erik Z for another packet of log sheets.

Remember that this means **DOUBLE** the fishing – a minimum of 6 trips at each site!

Ocean Study Site



Now, the Reporting...

			Site			Date
Species	Number Kept	Number Released		Length of first 10 (to nearest 1/2-inch)	White Perch	Striped Bass
White Perch				1		
Striped Bass				2		
				3		
				4		
				5		
				6		
				7		
				8		
				9		
				10		
Total Number of Fish Caught on This Trip						
Time Spent Fishing (Hours & Minutes)						
Total Number of Anglers Fishing on the Reef						
\$ Spent on This Trip (gas, tolls, parking, launch fees, bait, food & drinks)						

Now, the Reporting...

		Site			Date
Species	Number Kept	Number Released	Length of first 10 (to nearest 1/2-inch)	White Perch	Striped Bass
White Perch			1		
Striped Bass			2		
			3		
			4		
			5		
			6		
			7		
			8		
			9		
			10		
Total Number of Fish Caught on This Trip					
Time Spent Fishing (Hours & Minutes)					
Total Number of Anglers Fishing on the Reef					
\$ Spent on This Trip (gas, tolls, parking, launch fees, bait, food & drinks)					

Now, the Reporting...

Upper Bay Study Sites

		Site			Date
Species	Number Kept	Number Released	Length of first 10 (to nearest 1/2-inch)	White Perch	Striped Bass
White Perch			1		
Striped Bass			2		
			3		
			4		
			5		
			6		
			7		
			8		
			9		
			10		
Total Number of Fish Caught on This Trip					
Time Spent Fishing (Hours & Minutes)					
Total Number of Anglers Fishing on the Reef					
\$ Spent on This Trip (gas, tolls, parking, launch fees, bait, food & drinks)					

Now, the Reporting...

Lower Bay Study Site

			Site			Date
Species	Number Kept	Number Released	Length of first 10 (to nearest 1/2-inch)	Croaker	Striped Bass	
Croaker			1			
Striped Bass			2			
			3			
			4			
			5			
			6			
			7			
			8			
			9			
			10			
Total Number of Fish Caught on This Trip						
Time Spent Fishing (Hours & Minutes)						
Total Number of Anglers Fishing on the Reef						
\$ Spent on This Trip (gas, tolls, parking, launch fees, bait, food & drinks)						

Now, the Reporting...

Ocean Study Site

			Site				Date
Species	Number Kept	Number Released	Length of first 10 (to nearest 1/2-inch)	Sea Bass	Flounder		
Sea Bass			1				
Flounder			2				
			3				
			4				
			5				
			6				
			7				
			8				
			9				
			10				
Total Number of Fish Caught on This Trip							
Time Spent Fishing (Hours & Minutes)							
Total Number of Anglers Fishing on the Reef							
\$ Spent on This Trip (gas, tolls, parking, launch fees, bait, food & drinks)							

Remember!

- Time = “lines in the water”
to the nearest 10 minutes
- One log sheet per site per trip
- (Extra sheets provided on request)
- Only record **YOUR** catch
- Report **EVERY** trip

Request

- Will anyone take me on a trip?
- Please email or call

Linda Barker

Linda.Barker@maryland.gov

410-260-8284

Return Your Log Sheets

- We will send you a SASE

Questions?

???

THANKS!

and

HAVE FUN!