

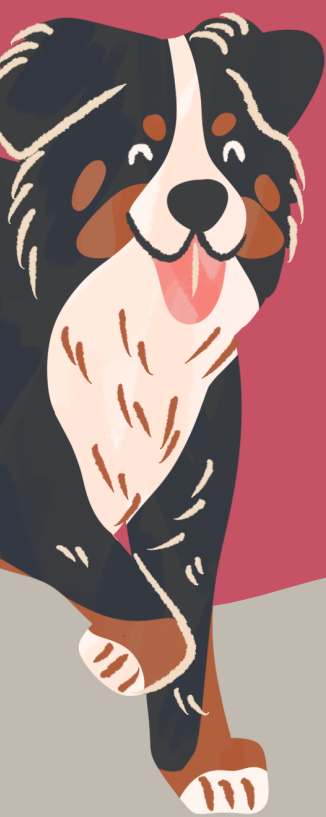
# Pet Safety

How to keep your best friend safe at Assateague



## prepare your family

Heat is one of the biggest challenges at Assateague during the summer, there is no natural shade on any campsites so plan ahead and monitor your pet's health during your visit.



## check your pet

While walking your pet, be aware of some native plants you may encounter such as Prickly Pear Cactus and Sandburs which can injure your pet's feet if stuck in the pads.

## take it slow & steady

Pets must be on a hand-held leash that is no longer than 6 feet and must be well-behaved at all times.



## cool down

You should avoid leaving pets in a parked car or non air-conditioned enclosed camping unit even if the windows are open. It takes only minutes for a pet left in a vehicle on a warm day to succumb to heatstroke and suffocation.

## enjoy the trip!

Camping with your pet can be an amazing experience if you follow these simple tips!



Always clean up after your pet and dispose of waste properly

